

Low-Cost Improvements to Bottleneck Locations, Phase II

March 15, 2012

Chen-Yuan Wang and Efi Pagitsas



Boston Region Metropolitan Planning Organization

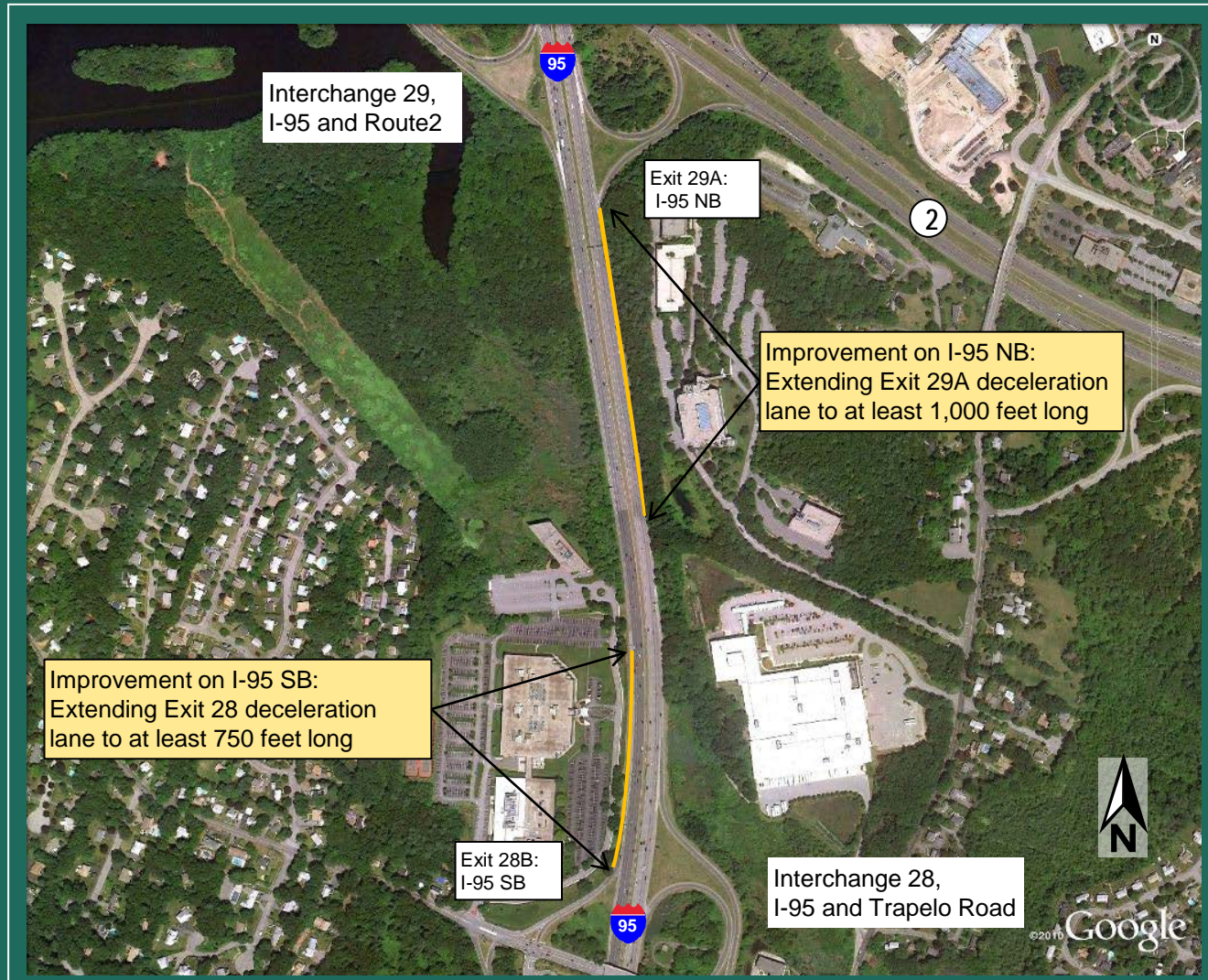
BRIEF INTRODUCTION

- Recommendation for UPWP from Federal Highway Administration
- Bottlenecks: congested highway segments with recurring operational problems, such as merges, diverges, lane drops, abrupt changes in highway alignment, and short entry/exit ramps
- Application of operational and low-cost solutions to bring about relief at bottlenecks
- Phase II: identified 7 candidate locations, selected 2 for study

I-95 between Interchange 28B (Waltham) and Interchange 29A (Lexington)



I-95 between Interchange 28B (Waltham) and Interchange 29A (Lexington)



I-95 Southbound at Interchange 32B Off-Ramp (Burlington)



I-95 Southbound at Interchange 32B Off-Ramp (Burlington)

