



Identifying Large-Impact Development Projects in Core Area Municipalities

July 9, 2015

Bruce Kaplan, Brynn Leopold

Boston Region Metropolitan Planning Organization

Agenda

1. Core Capacity Constraints – Project Overview

- Study purpose
- Work completed to date

2. Development Projects – Ranking Methodology

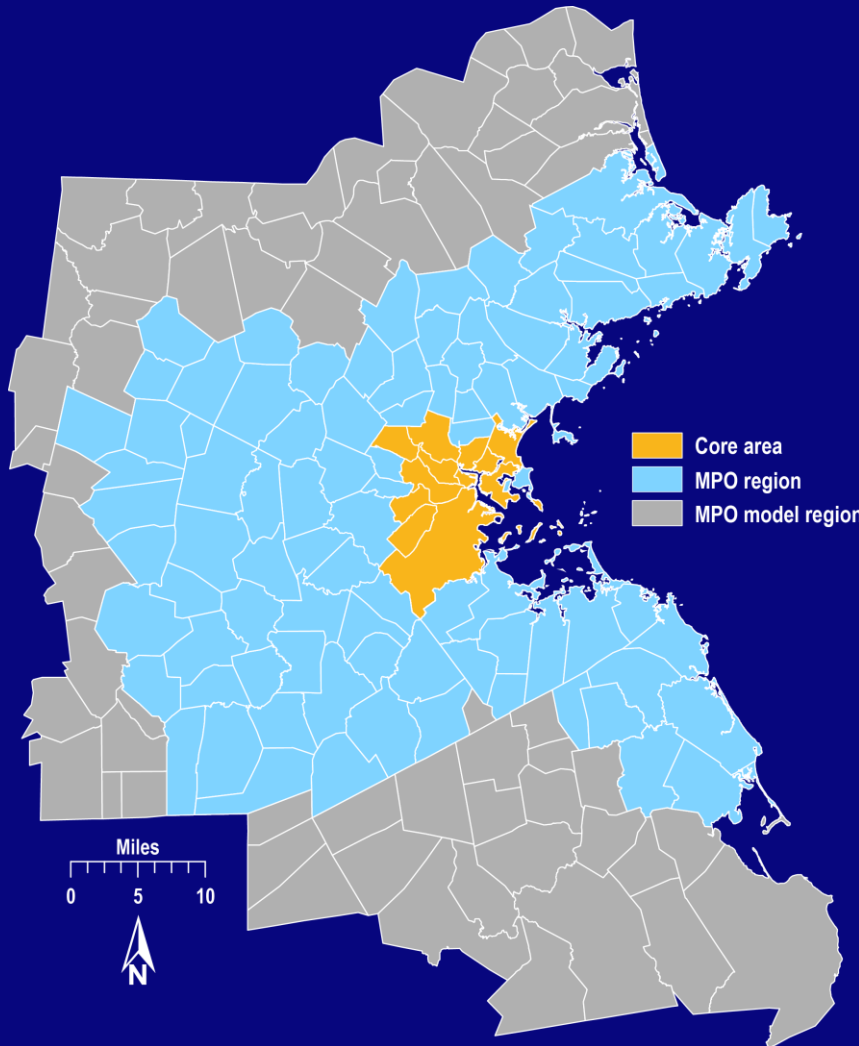
- Planned development projects – database
- Selected projects for in-depth analysis

3. Next Steps

Core Capacity Constraints Study

Can our roadway and transit infrastructure accommodate the future growth expected in the core area?

The “core area” is defined as the municipalities that are subject to Zone 1A fares on MBTA commuter rail routes.



Arlington	Boston	Brookline
Cambridge	Chelsea	Everett
Medford	Revere	Somerville

Study Tasks

1

Document land use, demographic, and transportation trends

2

Analyze existing transit ridership and traffic count data

3

Calibrate base-year travel model to existing conditions

4

Identify large-scale development plans and mitigation processes

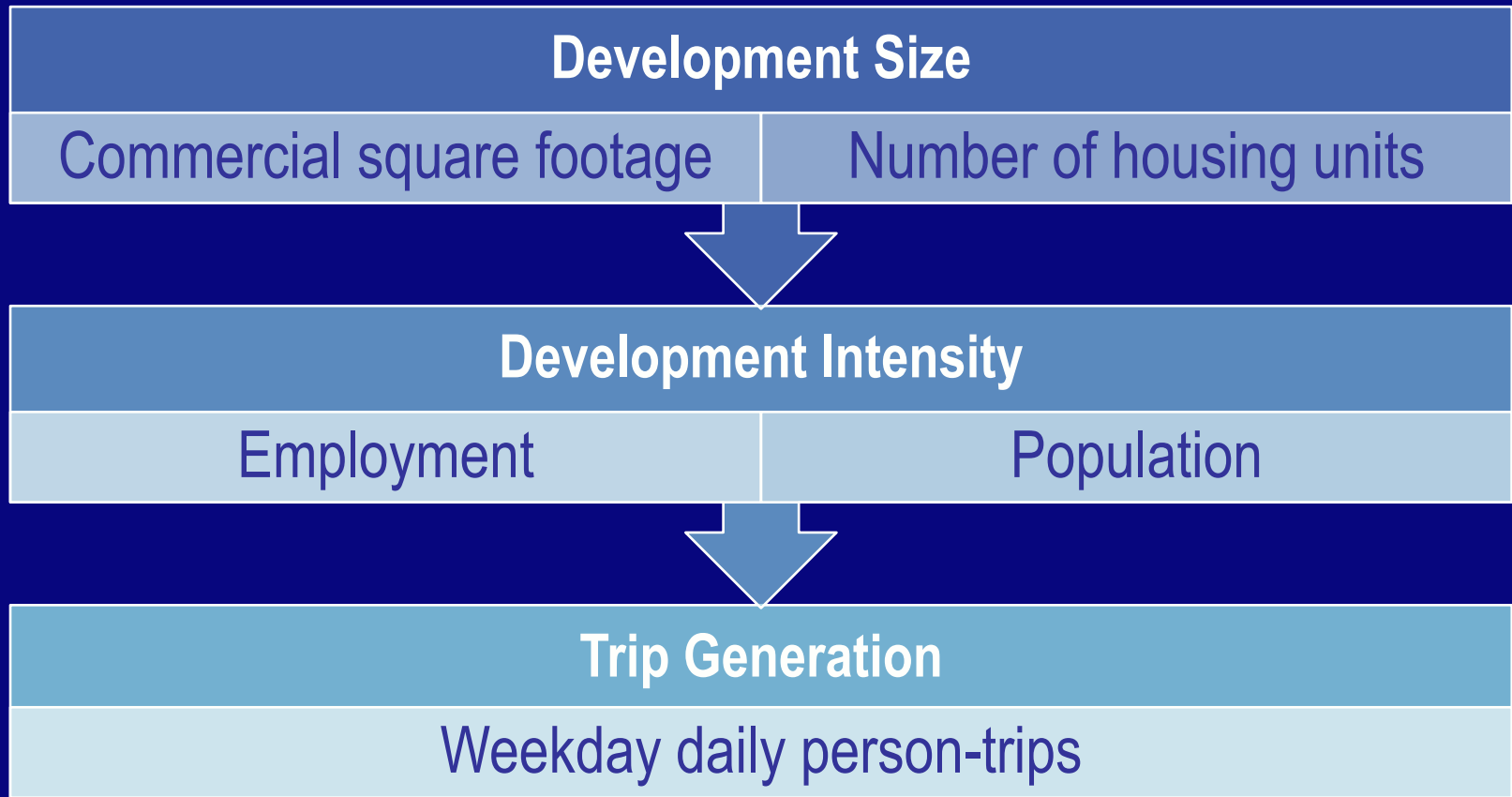
5

Forecast future-year (2040) travel patterns with and without planned developments

6

Review proposed mitigation strategies and funding mechanisms

Ranking Methodology



Planned Development Projects

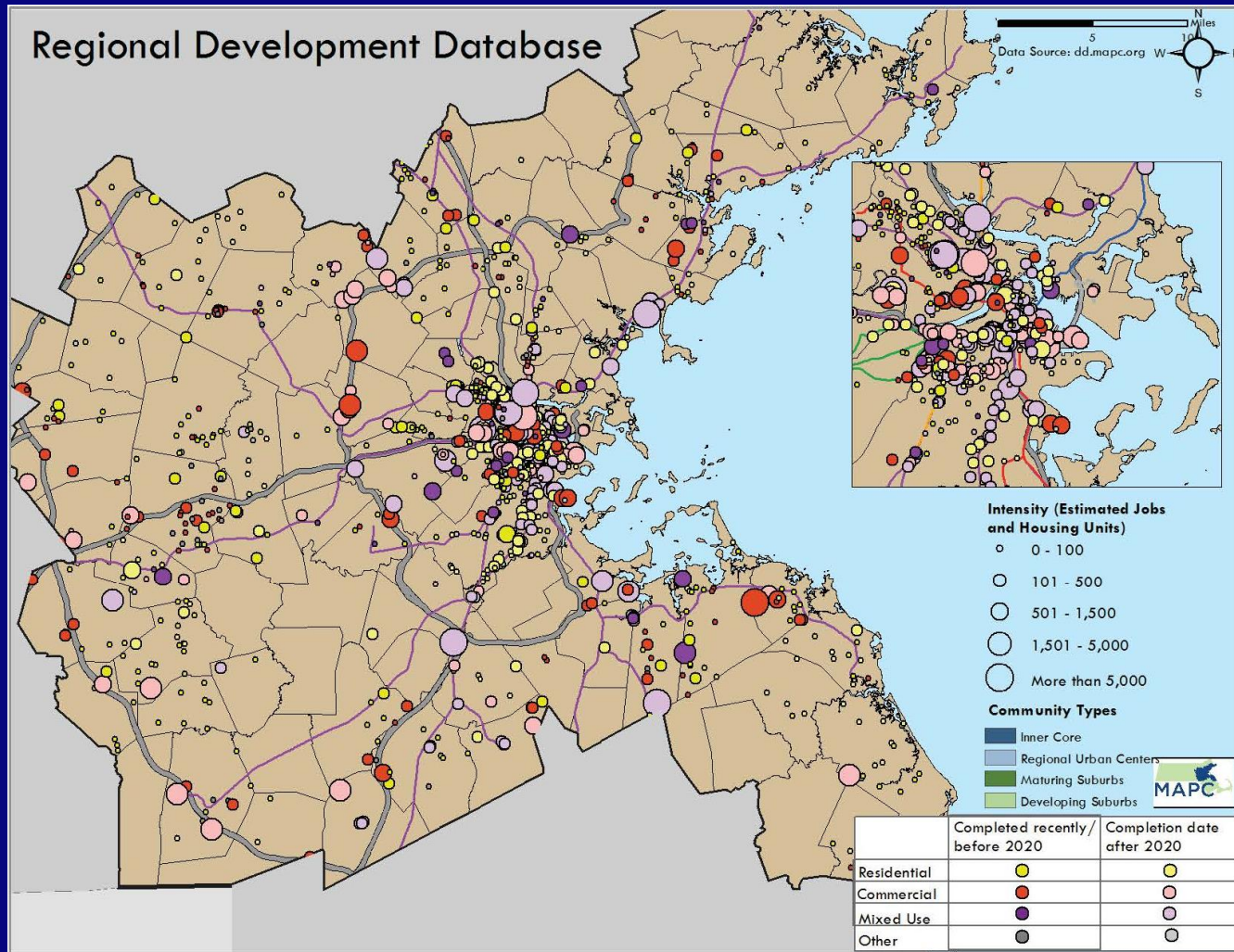
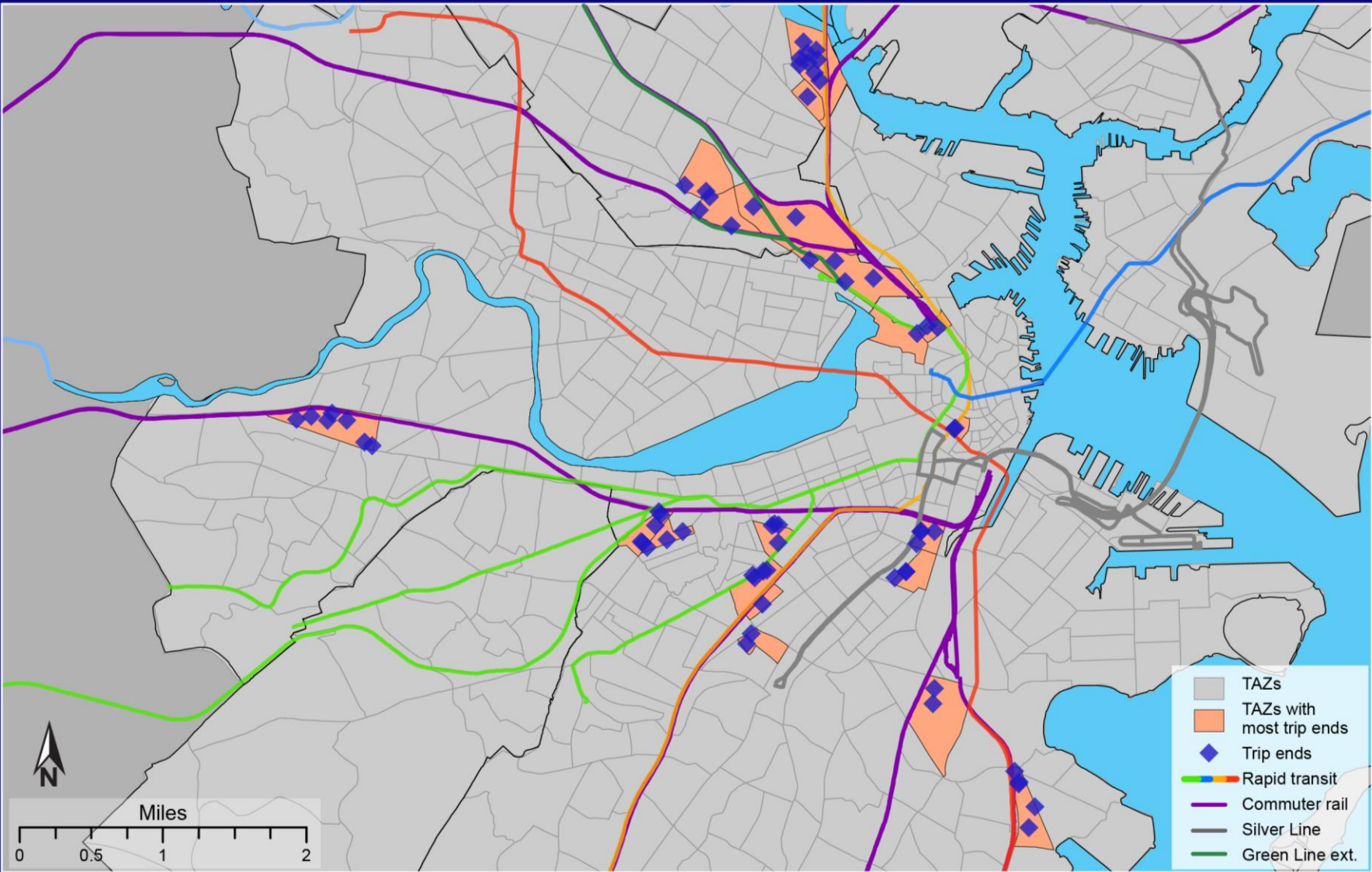


Image from MAPC, used in a presentation by Timothy Reardon at the March 10, 2015, "Project Mobility" Meeting on the Route 3 South Corridor, 2010-40.

Selected Development Projects



Next Steps

- **Calibrate the base-year travel model**
- **Run future-year 2040 scenario with and without selected planned developments**