



Route 20 East Corridor in Marlborough Subregional Priority Roadway Study

February 2, 2017

Mark Abbott and Chen-Yuan Wang

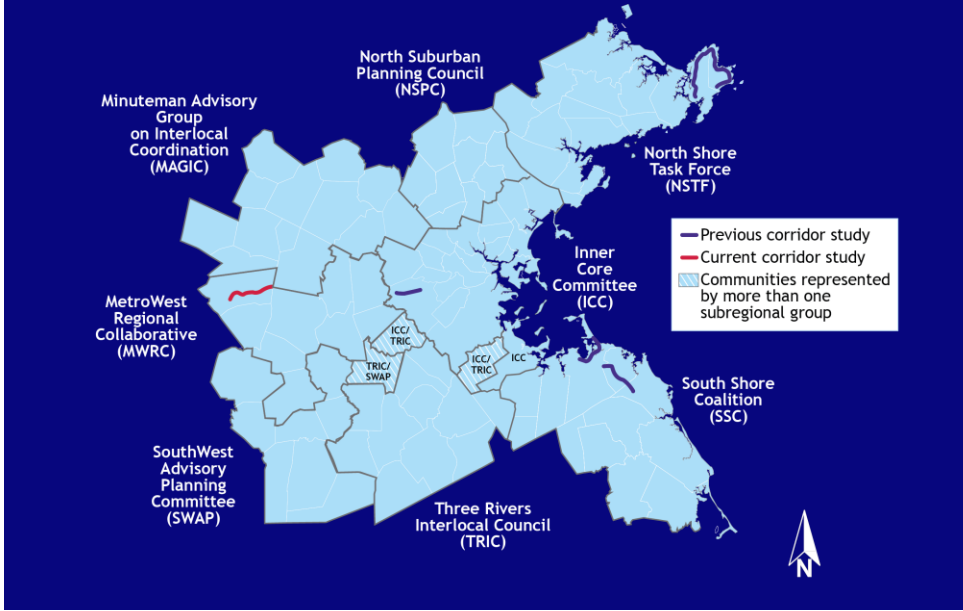
Boston Region Metropolitan Planning Organization

Study Objectives

- **Identify safety, mobility, access, and other transportation-related problems in the corridor**
- **Develop and evaluate potential multimodal transportation solutions**



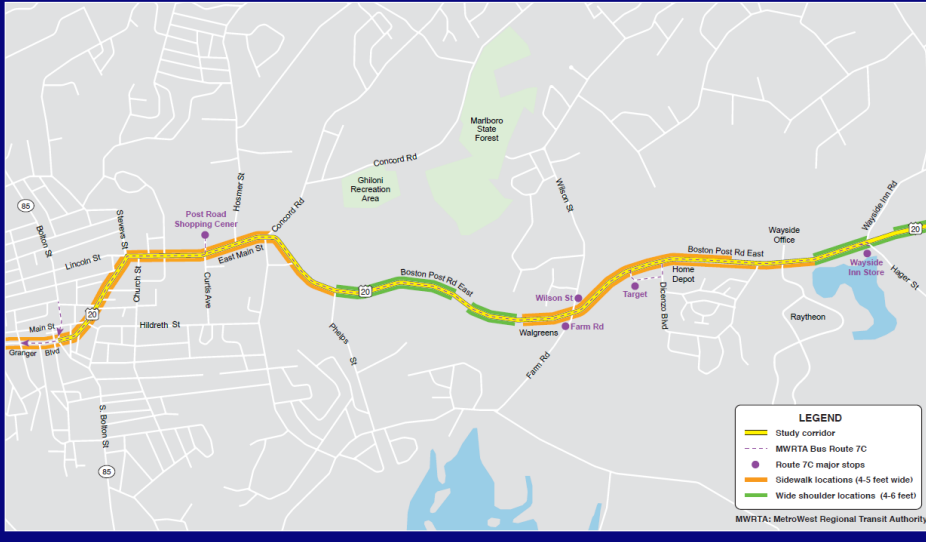
Study Locations



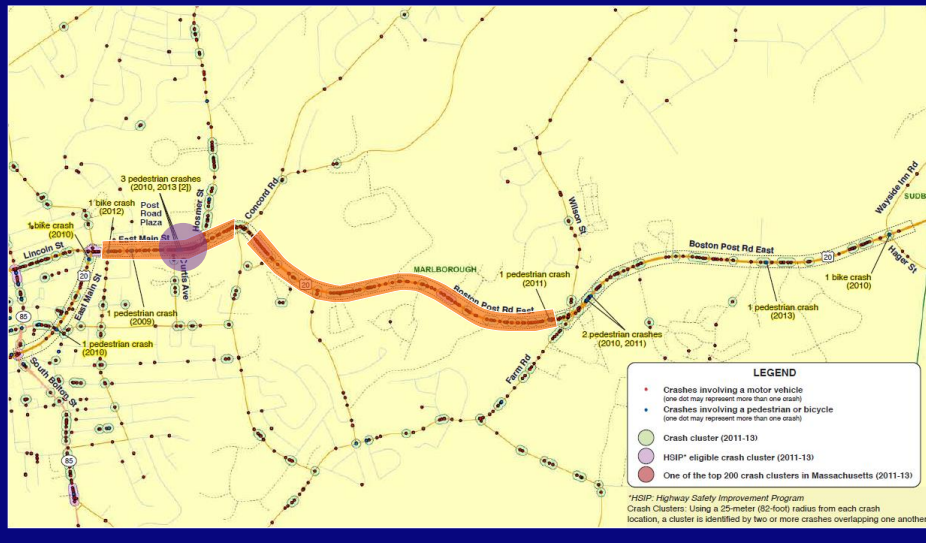
Existing Road Conditions



Transit Service and Pedestrian and Bicycle Facilities



Crash Locations and Crash Clusters





Recommendations

Short-term improvements:

- *Signage and marking improvements at various locations*
- *Optimize signal timing and phasing*
- *Lowering speed limit to 35 mph in some sections*
- *Narrowing travel lanes to accommodate wider shoulders for bicyclists*

Long-term improvements:

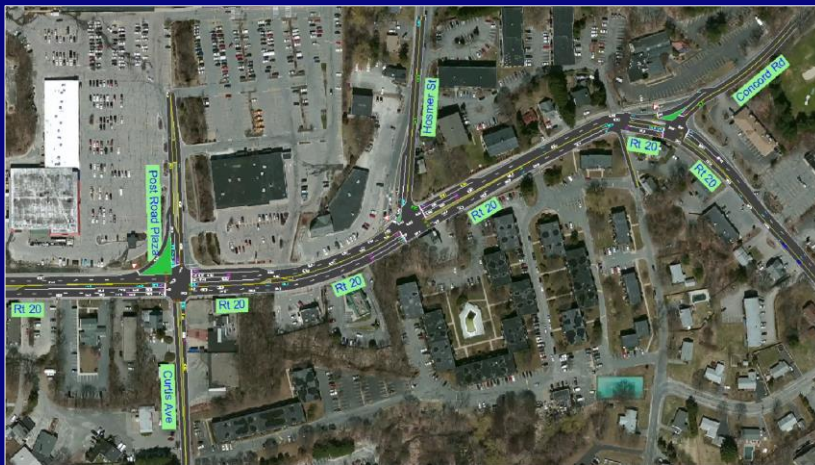
- *Adding sidewalks and sufficient shoulders in the corridor for pedestrians and bicyclists*
- *Three-Lane Roadway Widening: between Concord Road and Farm Road*
- *Three-Lane Roadway Reconfiguration: Diconzo Boulevard and Raytheon Driveway*



Proposed Long-Term Improvements Route 20 between Curtis Avenue and Hosmer Street



Proposed Long-Term Improvements Route 20 Signalization at Concord Road and Signal Coordination



Proposed Long-Term Improvements Route 20 between Concord Road and Farm Road (1)



Proposed Long-Term Improvements Route 20 between Concord Road and Farm Road (2)



Proposed Long-Term Improvements Route 20 between Concord Road and Farm Road (3)



Proposed Long-Term Improvements Route 20 in the Vicinity of Farm Road



Proposed Long-Term Improvements Route 20 in the Vicinity of Diconzo Boulevard



Proposed Long-Term Improvements Route 20 Three-Lane Reconfiguration



Proposed Long-Term Improvements Route 20 in the Vicinity of Raytheon Driveway



Proposed Improvements Route 20 between Raytheon Driveway and Sudbury Town Line



Expected Benefits

Short-term improvements:

- *Improve safety and operations with relatively low cost*

Long-term improvements:

- *Improve access and safety for pedestrians and cyclists*
- *Slow down traffic and improve access management and safety*
- *Reduce traffic congestion and improve safety for all*



Implementation

- Short-term improvements
- Two projects under design:
 - Route 20 Resurfacing Project (2019 TIP)
 - East Main Street Revitalization (2015 MassWorks Infrastructure Program)
- Long-term improvements



Questions or Comments?

Thank you.