

Projects, Grouped by MPO Investment Category

Bicycle/Pedestrian

607738	Bedford	Minuteman Bikeway Extension, from Loomis Street to the Concord T.L.
608164	Sudbury	Bruce Freeman Rail Trail, Phase 2D
608006	Framingham	Pedestrian Hybrid Beacon Installation at Route 9 and Maynard Road

Complete Streets

607777	Watertown	Rehabilitation of Mount Auburn St. (Route 16)
608078	Chelsea	Reconstruction of Broadway, from City Hall to the Revere City Line
608348	Beverly	Rehabilitation of Bridge St.
608275	Malden	Lighting and Sidewalk Improvements on Exchange Street
602310	Danvers	Reconstruction on Collins St.
601607	Hull	Reconstruction of Atlantic Ave. and related work
601704	Newton	Reconstruction and signal improvements on Walnut St.
605743	Ipswich	Resurfacing and related work on Central and South Main Sts.
608007	Cohasset	Corridor Improvements and Related Work on Justice Cushing Highway (Route 3A), from Beechwood Street to the Scituate Town Line
604735	Medfield	Reconstruction of North St.
607899	Dedham	Pedestrian improvements along Bussey St.

Intersection Improvements

606130	Norwood	Intersection improvements at Route 1A and Upland Rd./Washington St. and Prospect St./Fulton St.
608229	Acton	Intersection Improvements at Massachusetts Avenue (Route 111) and Main Street (Route 27) (Kelley's Corner)
608146	Marblehead	Intersection improvements to Pleasant St. at Village/Vine/Cross Streets
604231	Marlborough	Intersection and signal improvements on Route 20 (East Main St./ Boston Post Rd.) at Concord Rd.
607249	Sudbury (MassDOT)	Intersection improvements at Route 20 and Landham Rd.
607305	Reading (MassDOT)	Intersection Signalization at Route 28 and Hopkins Street
606002	Duxbury	Signal installation at Route 3 (NB and SB) ramps and Route 3A (Tremont St.)

Project descriptions provided on the following pages

Bedford - Minuteman Bike Trail Extension (607738)

Location: Railroad Avenue and the existing Reformatory Branch Trail, from Railroad Avenue to Wheeler Drive, near the Bedford/Concord Town line.

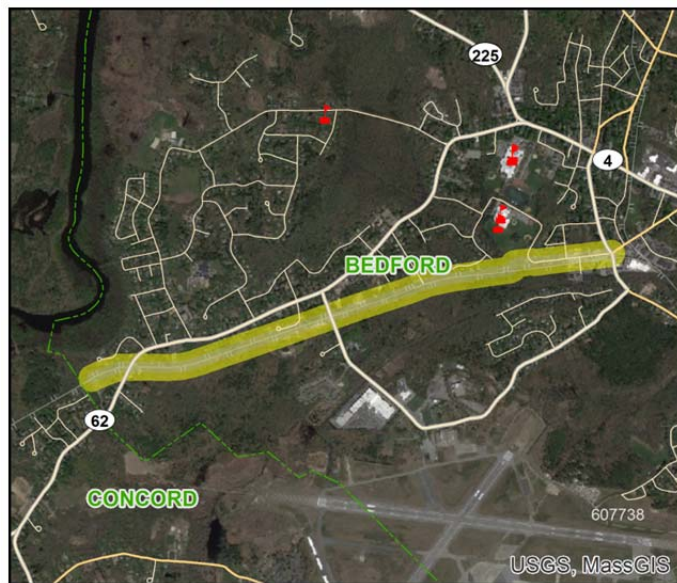
MPO Investment Category:
Bicycle/Pedestrian Improvements

Main Objectives:

- Extend Minuteman Bikeway, which currently ends at Depot Park in Bedford, to the Concord town line
- Add bicycle and pedestrian accommodations to Railroad Avenue

Project Details:

- Approximately 2.28 miles
- Reformatory Branch Trail improvements:
 - Redesign existing path to create a surface that is safe and stable for all user groups
 - Create rest areas to take advantage of vistas along the trail
 - Redesign the drainage ditches on either side of the existing trail
 - Install bollards or gates at the path ends to prohibit motorized vehicles and maintain accessibility to people with disabilities
 - Enhance existing parking areas with signage and pavement markings to enhance vehicle circulation
- Railroad Avenue improvements include the addition of/improvements to:
 - Sidewalks
 - Bike accommodations
 - Drainage
 - Pavement markings
 - Signs
 - Curb cuts



Sudbury - Bruce Freeman Rail Trail, Phase 2D (608164)

Location: Section of the rail trail from the Concord town line to Station Road (MassCentral Rail Trail)

MPO Investment Category:
Bicycle/Pedestrian

Main Objectives:

- Provide a connection between the Bruce Freeman Rail Trail (north-south corridor) and the MassCentral Greenway (23 miles of east-west corridor)
- Provide connections between open space, recreational areas, conservation areas, the commercial district, and Sudbury's historic town center



Project Details:

- Construct 4.6 miles of rail trail to complete the next segment of the Bruce Freeman Rail Trail (Lowell to Framingham)
- Replace existing railroad right-of-way with MassDOT recommended pavement for abandoned rail corridors
- Construct path that is 10-feet wide with 2-foot grass or gravel shoulders; path will comply with all ADA/AAB requirements
- No pavement rehabilitation would take place where the trail crosses existing roadways
- Analyze the seven locations where the trail crosses public roadways (Route 117, Pantry Road, Haynes Road, Morse Road, Route 27, Codjer Lane, and Old Lancaster Road) for appropriate improvements necessary to provide safe crossing and access in accordance with the Manual on Uniform Traffic Control Devices

Framingham - Pedestrian Hybrid Beacon Installation at Route 9 and Maynard Road (608006)

Location: Route 9 in the vicinity of Maynard Road and the Framingham Fire Station

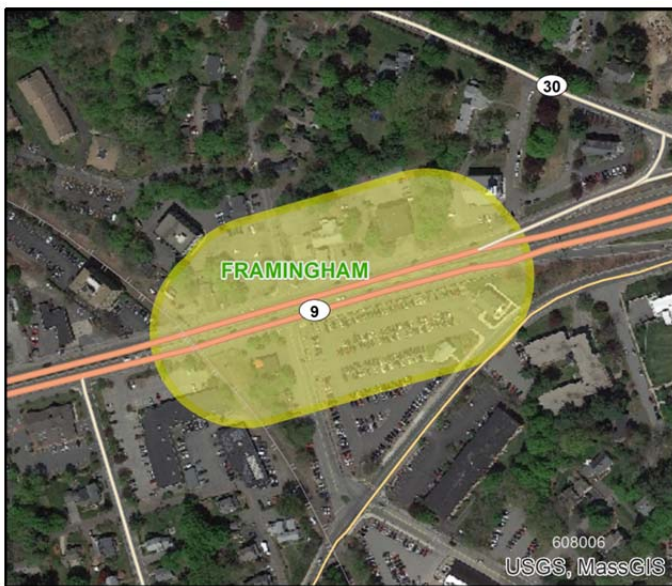
MPO Investment Category:
Bicycle/Pedestrian Improvements

Main Objectives:

- Improve pedestrian safety in the project area

Project Details:

- Construction of a pedestrian hybrid beacon and crosswalk on the east side of the Route 9 and Maynard Road intersection. Details include:
 - Crosswalk will be at-grade
 - Crossing will be controlled by a High-Intensity Activated crossWalk beacon (HAWK) mounted on an 8-foot post with a 30-foot mast arm with signal control over the eastbound and westbound travel lanes
- Upgrade the Route 9 median.
 - Convert this to a concrete barrier with fencing and narrowing the median opening which allows emergency vehicle access across Route 9
- Reconstruction of the existing emergency signal for the Framingham Fire Station on Route 9 and the CSX railroad crossing. The new traffic control cabinet and foundation will be constructed to allow continued emergency vehicle pre-emption



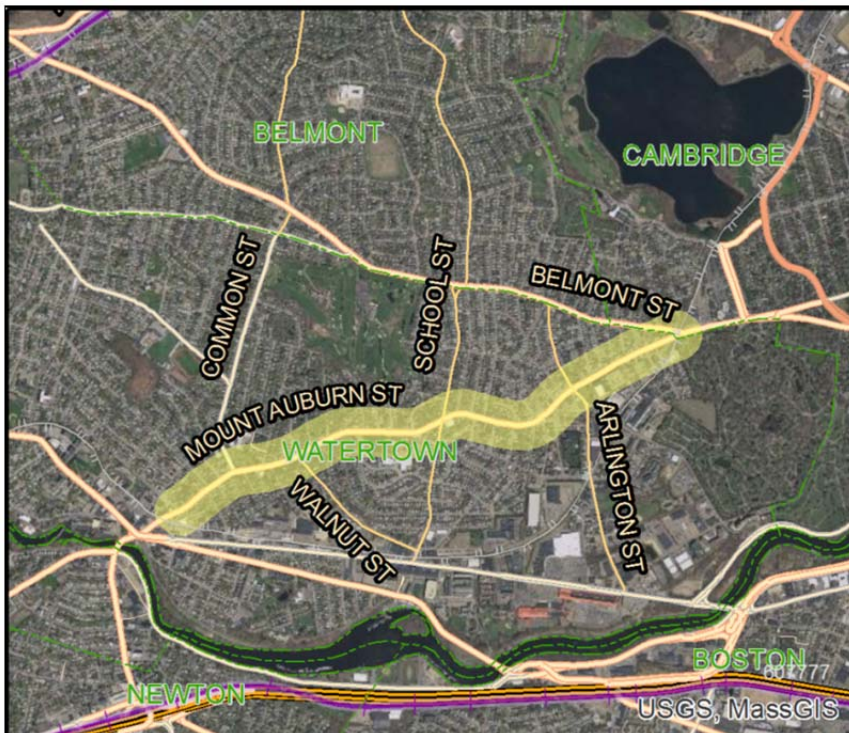
Watertown - Rehabilitation of Mount Auburn Street (607777)

Location: Mount Auburn Street (Route 16) from Cambridge city line to Summer Street just east of Watertown Square

MPO Investment Category:
Complete Streets

Main Objectives:

- Make the area safer to travel as a pedestrian or bicyclist
- Reduce congestion
- Increase safety for residents, students, and patrons of local businesses
- Improve vehicle access to and from businesses and private development



Project Details:

- Proposed improvements will include:
 - A road diet east of Common Street will reduce the four-lane corridor to two lanes allowing for a bicycle lane in each direction and shortened pedestrian crossings
 - New traffic signal at Mount Auburn and Grove Street
 - All other signals will be upgraded
 - Pedestrian signals provided at:
 - Mount Auburn and Dexter Avenue/Upland Road
 - Mount Auburn and Boylston Street
 - Parker Street will become one-way, eliminating the need for a signal

Chelsea - Reconstruction of Broadway from City Hall to the Revere City Line (608078)

Location: Broadway (Route 107) from City Hall to Revere city line (1 mile)

MPO Investment Category:
Complete Streets

Main Objectives:

- Make the area safer to travel as a pedestrian or bicyclist
- Reduce congestion
- Increase safety for residents, students, and patrons of local businesses

Project Details:

- Proposed improvements will include:
 - Roadway reconstruction including surface and subsurface work
 - New dedicated bike lane
 - Upgrades to existing sidewalk network including ADA compliant ramps at all intersections along with pedestrian signals
 - Upgrades to signals, with one signal replacement
 - Project will be coordinated with the proposed MBTA Key Routes improvements



Beverly - Rehabilitation of Bridge Street (608078)

Location: Bridge Street from Danvers city line, crossing the Bass River to the intersection with River Street (1.3 miles)

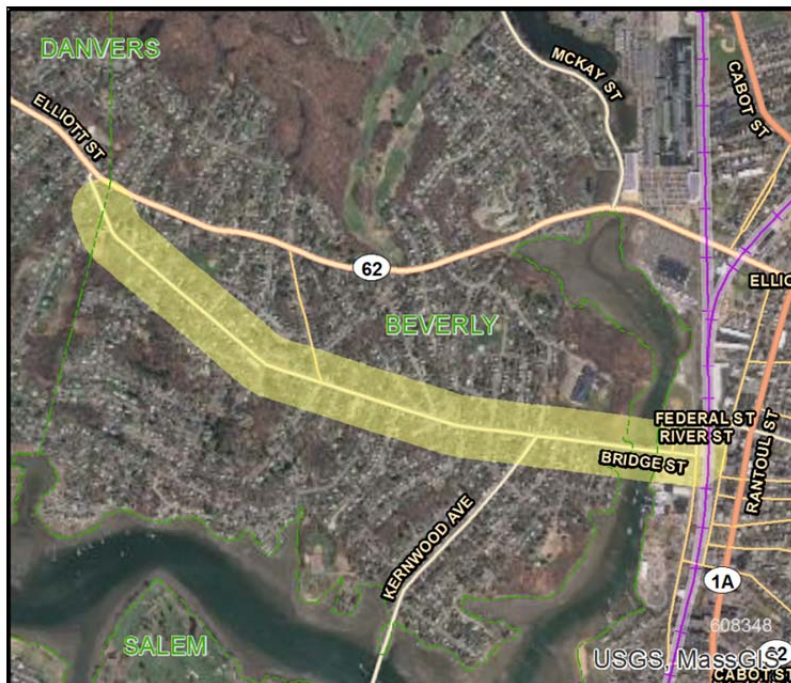
MPO Investment Category:
Complete Streets

Main Objectives:

- Make the area safer to travel as a pedestrian or bicyclist
- Reduce congestion
- Increase safety for residents patrons of local businesses, and users of the roadway

Project Details:

- Proposed improvements will include:
 - Widening and/or reconstructing all sidewalks to seven-foot width, textured crosswalks, and five-foot shoulders for bicycles
 - New traffic signal at Kernwood Avenue and River Street
 - Signals at Livingstone Avenue will be upgraded
 - Three intersections of Bridge Street (Cressy Street, County Way/Bates Park Avenue, and Eastern Avenue) will be realigned to become T-intersections, providing safer crossings for bicycles and pedestrians



Malden - Pavement, Sidewalk Rehabilitation, and Other Improvements on Exchange Street* (Lighting and Sidewalk Improvements on Exchange Street) (608275)

Location: Exchange Street from Abbott Street to Main Street, including the connecting side streets of Abbott Street, Washington Street, and Middlesex Street.

MPO Investment Category: Complete Streets

Main Objectives:

- Improve vehicular and pedestrian connections within the downtown
- Enhance the streetscape including pedestrian safety and aesthetic improvements
- Provide dedicated on-street bicycle lane
- Improve Exchange Street to accommodate all users



Project Details:

- Along Exchange Street (0.31 miles/0.62 lane miles) in the project area, as well as along the connecting side streets, the project would make the following improvements:
 - Pavement reconstruction or rehabilitation
 - ADA compliant sidewalks and pedestrian ramps
 - Sidewalk extensions (curb bump-outs) at intersections
 - Dedicated pavement markings along Exchange Street for a bike lane
 - New street trees
 - ADA compliant tree grates
 - LED lighting
 - Benches
 - Bicycle racks
 - Trash receptacles
 - Street signs
 - Repair or replacement of drainage infrastructure, including the adjustment of vertical profile grades along the gutter lines to improve drainage

*** Note: this is not the official MassDOT project name. This temporary name change more accurately reflects the objectives of the project.**

Danvers - Reconstruction of Collins Street (602310)

Location: Collins Street from
Sylvan Street to Centre and
Holten Streets

MPO Investment Category:
Complete Streets

Main Objectives:

- Make the area safer to travel as a pedestrian or bicyclist
- Reduce congestion
- Increase safety for residents patrons of local businesses, and users of the roadway

Project Details:

- Proposed improvements will include:
 - Reconfiguring the Collins Street approach to Centre Street to create a T-intersection and adding an exclusive right-turn lane on Centre Street
 - New traffic signal at Collins Street at Centre Street/Holten Street
 - Sidewalk and bicycle accommodations will be provided along the corridor



Hull - Reconstruction of Atlantic Avenue and Related Work (601607)

Location: Atlantic Avenue from Nantasket Avenue (Route 228) to the Cohasset Town Line (6300 feet)

MPO Investment Category:
Complete Streets

Main Objectives:

- Make the area safer to travel as a pedestrian or bicyclist
- Increase safety for residents patrons of local businesses, and users of the roadway

Project Details:

- Proposed improvements will include:
 - Reconstruction of Atlantic Avenue with a cross-section of two 11-foot lanes and two 4-foot shoulders
 - New 5.5-foot sidewalk on the south side of the roadway
 - Intersection improvements at Atlantic Avenue and School Street includes the elimination of the exclusive left turn lane which will reduce pavement width to better facilitate pedestrian crossing
 - Geometric changes as the intersection of Atlantic Avenue with Summit Avenue and Stony Beach Road to provide a "T" configuration



Newton - Reconstruction and Signal Improvements on Walnut Street (601704)

Location: Walnut Street from Centre Street to just south of its intersection with Homer Street (6,000 linear feet) and Centre Street from just east of the Route 9 Interchange to Walnut Street (540 linear feet)

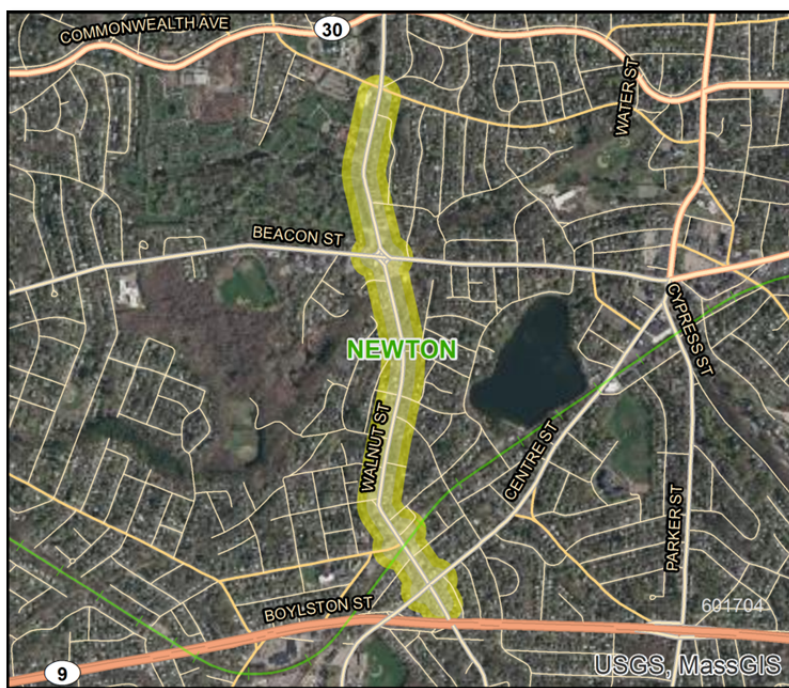
MPO Investment Category:
Complete Streets

Main Objectives:

- Make the area safer to travel as a pedestrian or bicyclist
- Improve traffic flow
- Increase safety for residents and users of the roadway

Project Details:

- Proposed improvements will include:
 - Roadway reconstruction along the corridor
 - Walnut and Beacon Streets – elimination of channelized right-turn lanes will make navigation of intersection with fewer conflicts, more direct pedestrian crossings, signal upgrades
 - Walnut and Lincoln Streets and Walnut and Centre Streets – new accessible ramps and shorter intersection crossings, signal upgrades and coordination



Ipswich - Resurfacing and Related Work on Central and South Main Streets (605743)

Location: Central and South Main Streets from the intersection of Central Street and Mineral Street to the north to the intersection of South Main Street and County Road to the south through the downtown area

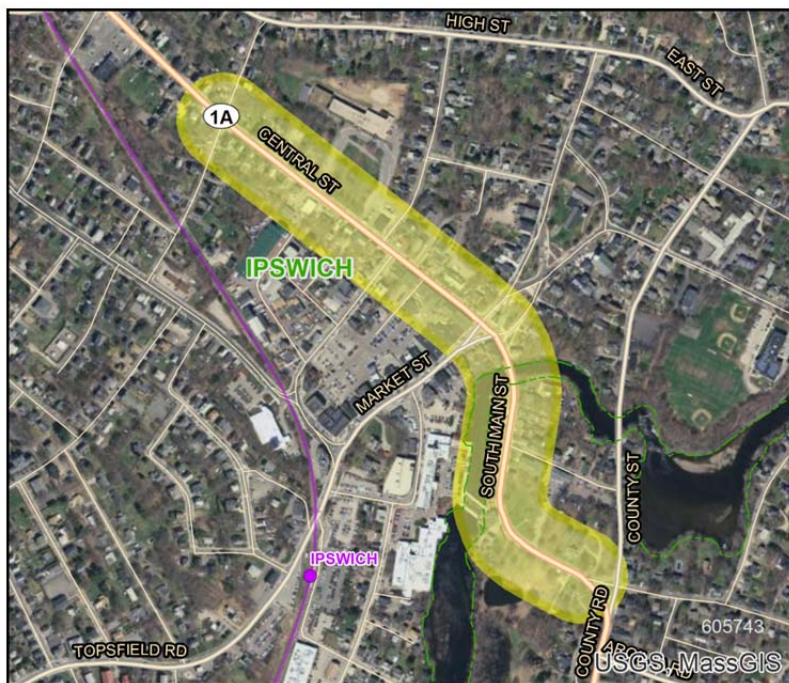
MPO Investment Category:
Complete Streets

Main Objectives:

- Make the area safer to travel as a pedestrian or bicyclist
- Increase safety for residents patrons of local businesses, and users of the roadway

Project Details:

- Proposed improvements will include:
 - Reconstructed roadway to standardize roadway cross-section to allow for improved traffic flow
 - Modify traffic islands at South Main Street/Poplar Street/County Street for traffic calming and to improve traffic flow
 - Improved facilities for bicyclists and pedestrians
 - Clarify roadway layout for motorists and minimize conflicts between motorists, pedestrians, and cyclists
 - Provide ADA compliant sidewalks and crosswalks
 - Enhance cycling opportunities and cyclist safety through designated bicycle travel where possible



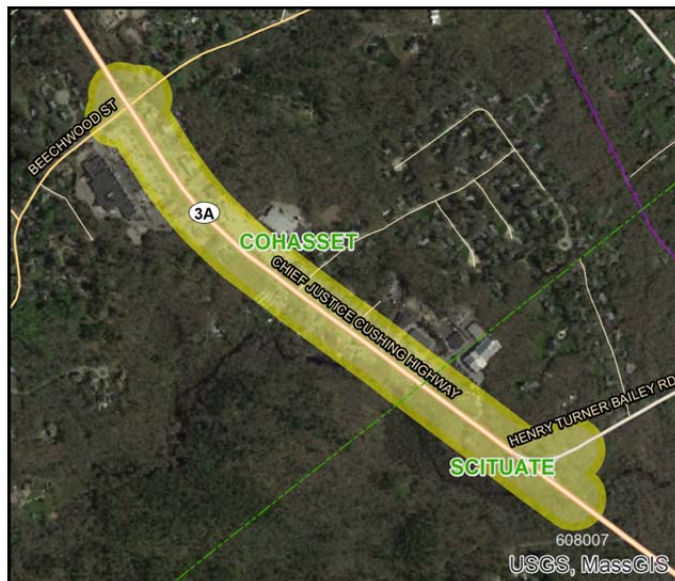
Cohasset - Corridor Improvements on Justice Cushing Highway (Route 3A), from Beechwood Street to the Scituate Town Line (608007)

Location: Route 3A between Beechwood Street and Henry Turner Bailey Road

MPO Investment Category: Complete Streets

Main Objectives:

- Improve safety of this section of Route 3A, in the vicinity of a commercial area
- Improve the safety at the intersection of Route 3A and Beechwood Street
- Add bicycle and pedestrian accommodations throughout the project area



Project Details:

- Approximately 0.75 miles (and 1.86 lane miles)
- Signalization and roadway geometry improvements at the intersections at the northwest (Route 3A and Beechwood Street) and southeast (Route 3A and Henry Turner Bailey Road) limits of the project area. Including:
 - Maintain existing traffic signal at Route 3A and Beechwood Street
 - New traffic signal at the intersection of Route 3A and Henry Turner Bailey Road.
 - Some geometric changes include:
 - Exclusive left turn lanes on Route 3A at Beechwood Street
 - Shared lanes on Beechwood Street
 - Raised median south of Beechwood Street to restrict left turn lanes into and out of the gas station at this location
 - Exclusive left turn lane at the intersection of Henry Turner Bailey Road and Route 3A
- Provision of a two-way left turn lane through the commercialized area along Route 3A
- Reconstruction of all driveways within the project limits to include accessible pedestrian signals and ramps as well as the narrowing, consolidation, and clear delineation of access points along Route 3A
- Provision of a 6-foot sidewalk on each side of Route 3A in the project area with accessible pedestrian signals and ramps at the intersections and driveways
- Provision of a bicycle lane along each direction of Route 3A with bicycle detection at the signalized intersections

Medfield - Reconstruction of North Street (604735)

Location: Reconstruction of North Street, from Frairy Street to Pine Street (0.5 miles)

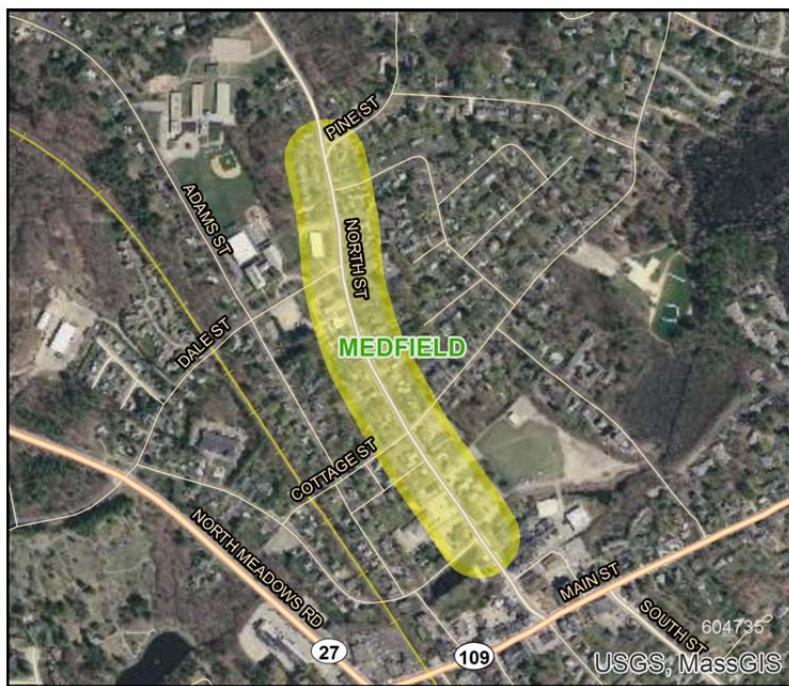
MPO Investment Category:
Complete Streets

Main Objectives:

- Make the area safer to travel as a pedestrian or bicyclist
- Increase safety for residents patrons of local businesses, and users of the roadway

Project Details:

- Proposed improvements will include:
 - Roadway reconstruction will improve pavement and add shoulders to the roadway cross-section for safe use by bicyclists
 - Provide compliant pedestrian ramps at crosswalk and intersection
 - Upgrade sidewalk network to improve pedestrian access and increase safety



Dedham - Pedestrian Improvements along Bussey Street (607899)

Location: Bussey Street from the Boston city line to south of Chauncey Street (0.5 miles)

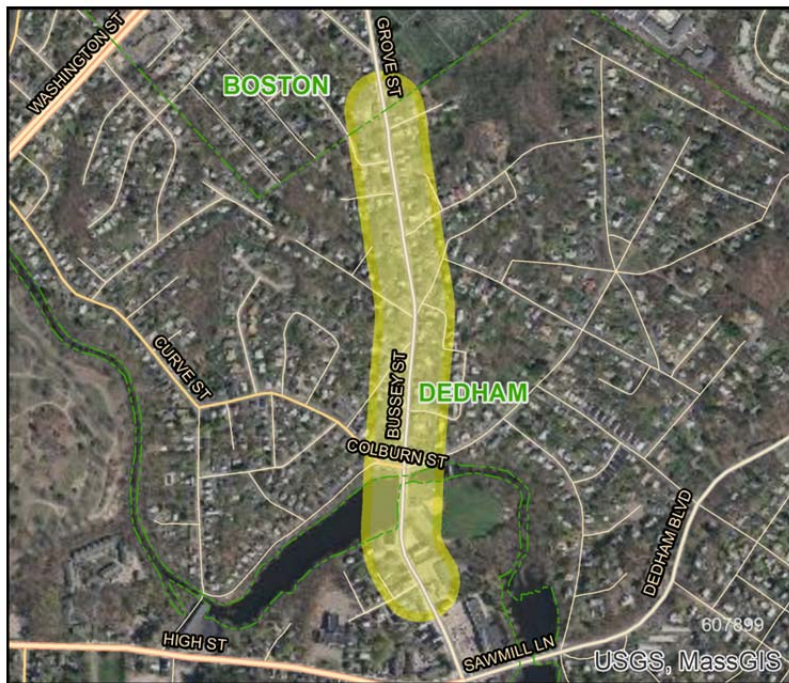
MPO Investment Category:
Complete Streets

Main Objectives:

- Make the area safer to travel as a pedestrian or bicyclist
- Rehabilitating pavement

Project Details:

- Proposed improvements will include:
 - Uniform roadway width striped for an 11-foot travel lane and a two-foot shoulder in each direction north of Colburn Street and an 11-foot travel lane and a five-foot shoulder in each direction south of Colburn Street
 - Minimum 5'-6" paved sidewalk on both sides of roadway
 - Bicycle accommodations by means of shared-lane markings or "sharrows" in the travel lane
 - New ADA-compliant wheelchair ramps at intersection of Bussey Street with Colburn Street and Colonial Drive/Clisby Avenue as well as crosswalks throughout corridor



Norwood - Intersection Improvements at Route 1A and Upland Road / Washington Street and Prospect Street/Fulton Street (606130)

Location: Intersection improvements at Route 1A and Upland Road/Washington Street and Prospect Street/Fulton Street

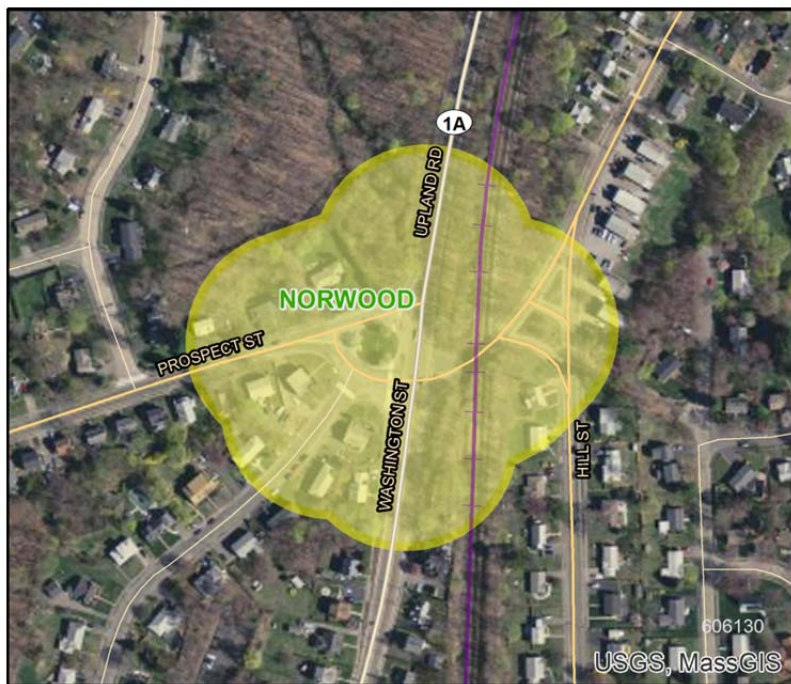
MPO Investment Category:
Intersection Improvement

Main Objectives:

- Make the area safer to travel as a pedestrian or bicyclist
- Improve traffic operations
- Increase safety for residents and users of the roadway

Project Details:

- Proposed improvements will include:
 - Installation of fully actuated traffic signal system at the Route 1A intersection
 - Roadway geometry including the realignment of Fulton Street to intersect Prospect Street west of the Route 1A Intersection to become a three-way unsignalized intersection
 - Widen Route 1A to provide a five-lane cross-section south of Prospect Street and a six-lane cross-section north of Prospect Street
 - Widen Washington Street northbound and Upland Road southbound to provide designated turn lanes where appropriate
 - Upgrade pedestrian accommodations with exclusive pedestrian signal phase
 - Provide bicycle accommodations including vehicle and bicycle detection



Acton - Intersection Improvements at Route 27 and Route 111 - Kelley's Corner (608229)

Location: Intersection of Route 27 (Main Street) and Route 111 (Massachusetts Avenue); west of Route 2 (at Exit 42, Route 27)

MPO Investment Category: Intersection Improvements

Main Objectives:

- Make the area safer to travel through as a pedestrian or bicyclist
- Reduce congestion
- Increase safety for residents, students, and patrons of local businesses
- Improve vehicle access to and from businesses and private development



Project Details:

- Rehabilitation of Main Street (0.45 mi), Massachusetts Avenue (0.48 mi), and Community Lane; approximately 2.18 lane miles (1.09 road miles)
- Includes five intersections:
 - Kelley's Corner: Intersection of Route 27 (Main Street) and Route 111 (Massachusetts Avenue)
 - Massachusetts Avenue and Charter Road (west of Kelley's Corner and southeast of the RJ Grey Junior High School)
 - Main Street and Community Lane (north of Kelley's Corner)
 - Massachusetts Avenue and Community Lane (east of Kelley's Corner)
 - Main Street and Beverly Road (south of Kelley's Corner)
- Proposed improvements will include:
 - Two 11' travel lanes on all roadways
 - Pedestrian (rehabilitated sidewalks) and bicycle accommodations (painted 5' shoulder) on all roadways
 - Curb cut/access management at commercial areas, the inclusion of 10' center turn lanes
 - Replacement of the traffic signals at the intersection of Main Street and Massachusetts Ave
 - New traffic signal at Community Lane and Route 27
 - Utility relocations
 - Drainage improvements
 - Street lighting
 - Pavement markings and improved signage
 - Landscaping improvements

Marblehead - Intersection Improvements to Pleasant Street at Village/Vine/ Cross Streets (608146)

Location: Intersection improvements to Pleasant Street at Village/Vine/Cross Streets

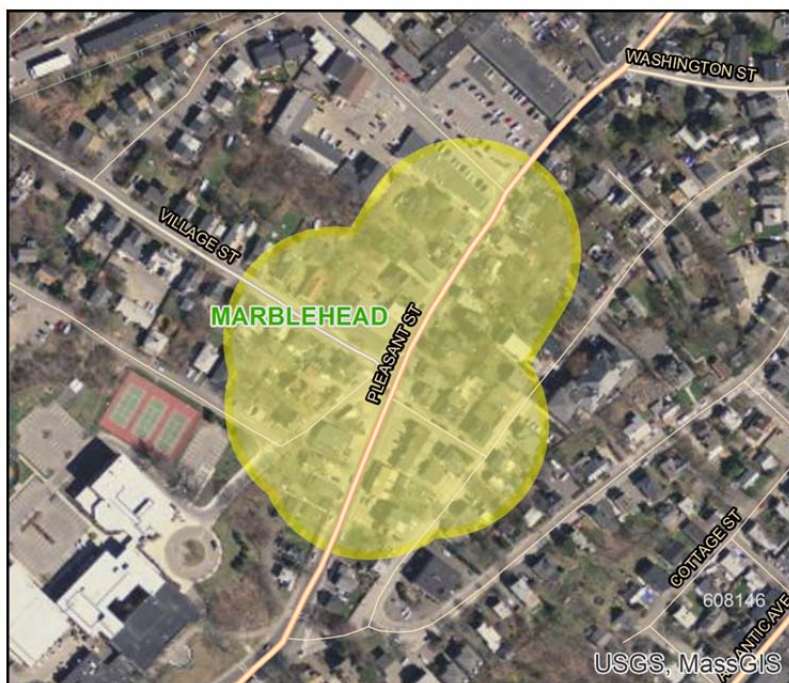
MPO Investment Category: Intersection Improvement

Main Objectives:

- Make the area safer to travel as a pedestrian or bicyclist
- Increase safety for residents, students, patrons of local businesses, and users of the roadway

Project Details:

- Proposed improvements will include:
 - Realignment of Vine Street to form a “T” intersection and realigning Pleasant Street to minimize crossing distance; conflict points will be reduced as a five-legged intersection will be replaced with a four-legged intersection and a three-legged intersection
 - Installation of new sidewalks, signs, and enhanced lighting
 - ADA/AAB crossing enhancements and shared bicycle accommodations



Marlborough - Intersection and Signal Improvements on Route 20 (East Main Street/Boston Post Road at Concord Road (604231))

Location: Route 20 (East Main Street/Boston Post Road at Concord Road

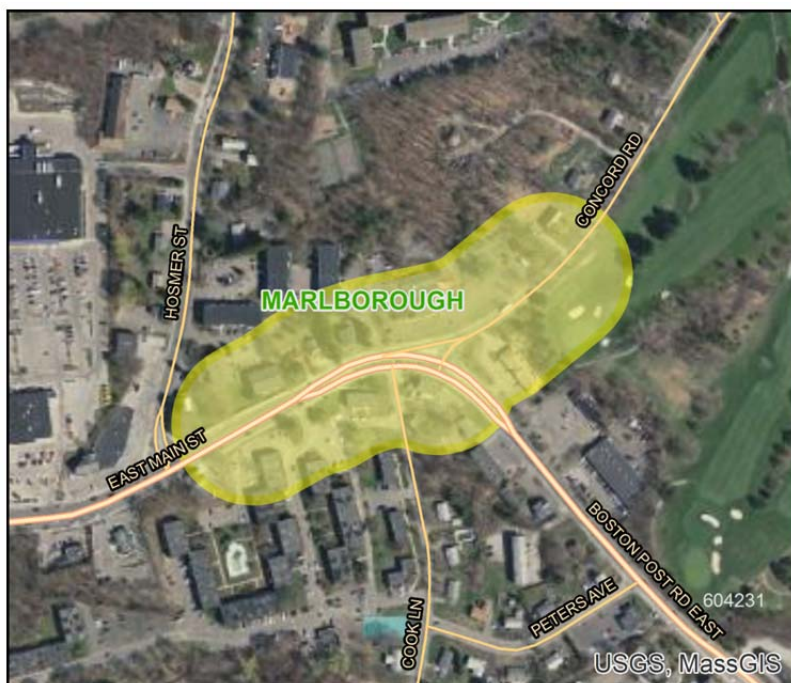
MPO Investment Category:
Intersection Improvement

Main Objectives:

- Make the area safer to travel as a pedestrian or bicyclist
- Reduce congestion
- Increase safety for residents and users of the roadway

Project Details:

- Proposed improvements will include:
 - Widen East Main Street to accommodate two travel lanes in each direction and one dedicated left turn lane
 - Reduce radius between Concord Road and East Main Street westbound to slow turning traffic
 - Construct scored median on eastbound approach to discourage left turn on to Cook Lane
 - Install a fully actuated signal and provide coordination with two intersections in proximity to study area
 - Install pedestrian crosswalk on Route 20 eastbound approach
 - Provide bicycle detection on all approaches



Sudbury - Intersection Improvements at Route 20 and Landham Road (607249)

Location: Intersection of Route 20 (Boston Post Road) and Landham Road

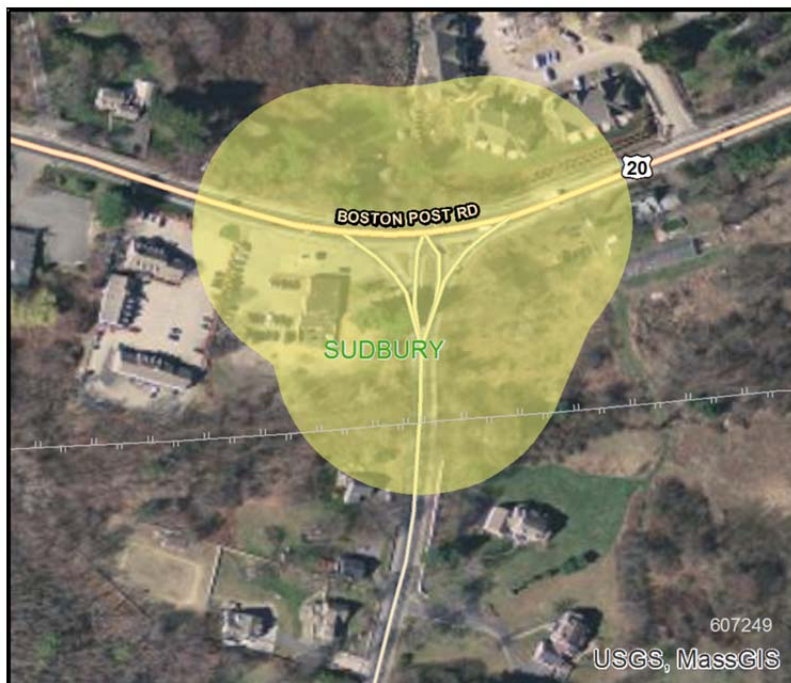
MPO Investment Category: Intersection Improvement

Main Objectives:

- Make the area safer to travel as a pedestrian or bicyclist
- Reduce congestion
- Increase safety for residents patrons of local businesses, and users of the roadway

Project Details:

- Proposed improvements will include:
 - Three lane cross-section on Route 20 will be constructed and the existing channelized right turn island will be removed
 - Easterly approach on Route 20 will include a dedicated left turn lane and through lane, westerly approach will consist of a formalized right turn lane and through lane
 - The northbound approach will consist of dedicated left and right turn lanes
 - New traffic signal at Route 20 and Landham Road
 - Sidewalk and wheelchair ramps will be installed
 - Dedicated bicycle lanes will be included along the three approaches to the intersection



Reading (MassDOT) - Intersection Signalization at Route 28 and Hopkins Street (607305)

Location: Intersection of Route 28 and Hopkins Street, north of the Route 128/Route 28 interchange.

MPO Investment Category:
Intersection Improvements

Main Objectives:

- Improve vehicular and pedestrian safety
- Improve intersection traffic operations
- Rehabilitate existing sidewalks and roadways
- Provide greater pedestrian mobility with improved sidewalks and AAB/ADA compliant wheelchair ramps



Project Details:

- Installation of a fully-actuated traffic signal system which would include:
 - Advance phase for northbound approach and protected permitted operation for left-turn vehicles
 - Protected, push-button actuated pedestrian crossing phase
 - Emergency vehicle preemption for all approaches
 - Coordinated operation with existing traffic signals at the two adjacent intersections (Main Street/South Street to the south) and Main Street/Summer Street to the north)
- Geometric improvements which would include:
 - Minor widening on Route 28 to provide minimum lane widths in both directions
 - Reconstruction of sidewalks on both sides of Route 28
 - Replacement of existing granite curb
 - Construction of new ADA/AAB compliant wheelchair ramps at all four corners of the intersection
 - Reconfiguration of the island on the eastbound Hopkins Street approach to facilitate left turns
- New pavement markings including stop lines and crosswalks for all four roadway approaches; new signage associated with the proposed improvements; and, replacement of existing signage

Duxbury - Signal Installation at Route 3 (NB and SB Ramps) and Route 3A (Tremont Street) (606002)

Location: Route 3A (Tremont Street) and the Route 3 northbound and southbound ramps

MPO Investment Category:
Intersection Improvement

Main Objectives:

- Make the area safer to travel as a pedestrian or bicyclist
- Reduce congestion
- Increase safety for residents and users of the roadway

Project Details:

- Proposed improvements will include:
 - Install a traffic control signal with bicycle and pedestrian accommodations at the Route 3 southbound and northbound ramps
 - Interconnect and coordinate traffic signals at the Route 3A/Route 3 southbound and northbound ramp intersections
 - Construct a sidewalk along Route 3A

