



# **Route 138 Priority Corridor Study**

## **Milton, Massachusetts**

**December 20, 2018**

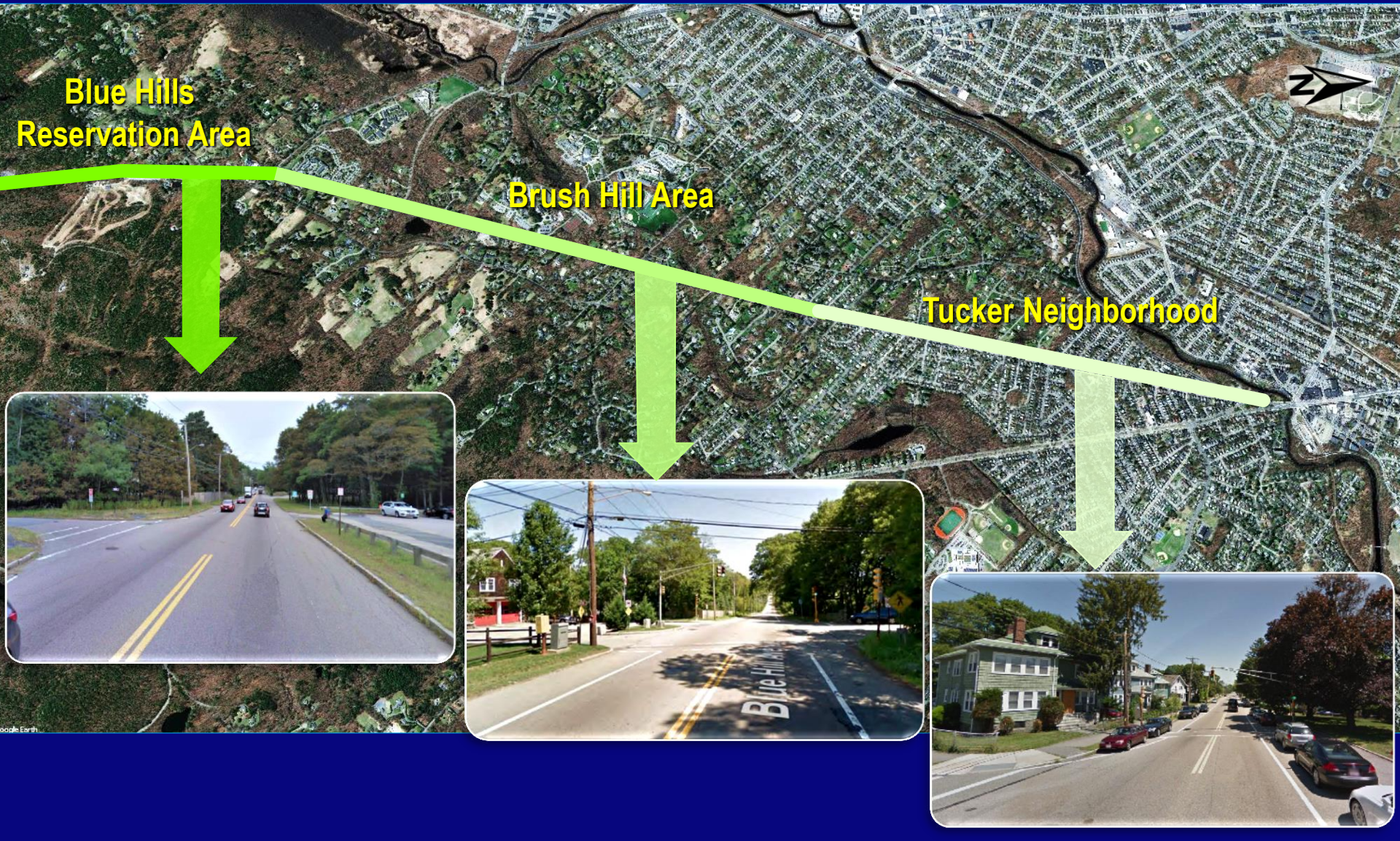
**Seth Asante and Benjamin Erban**

**Boston Region Metropolitan Planning Organization**

# Study Area



# Land Uses



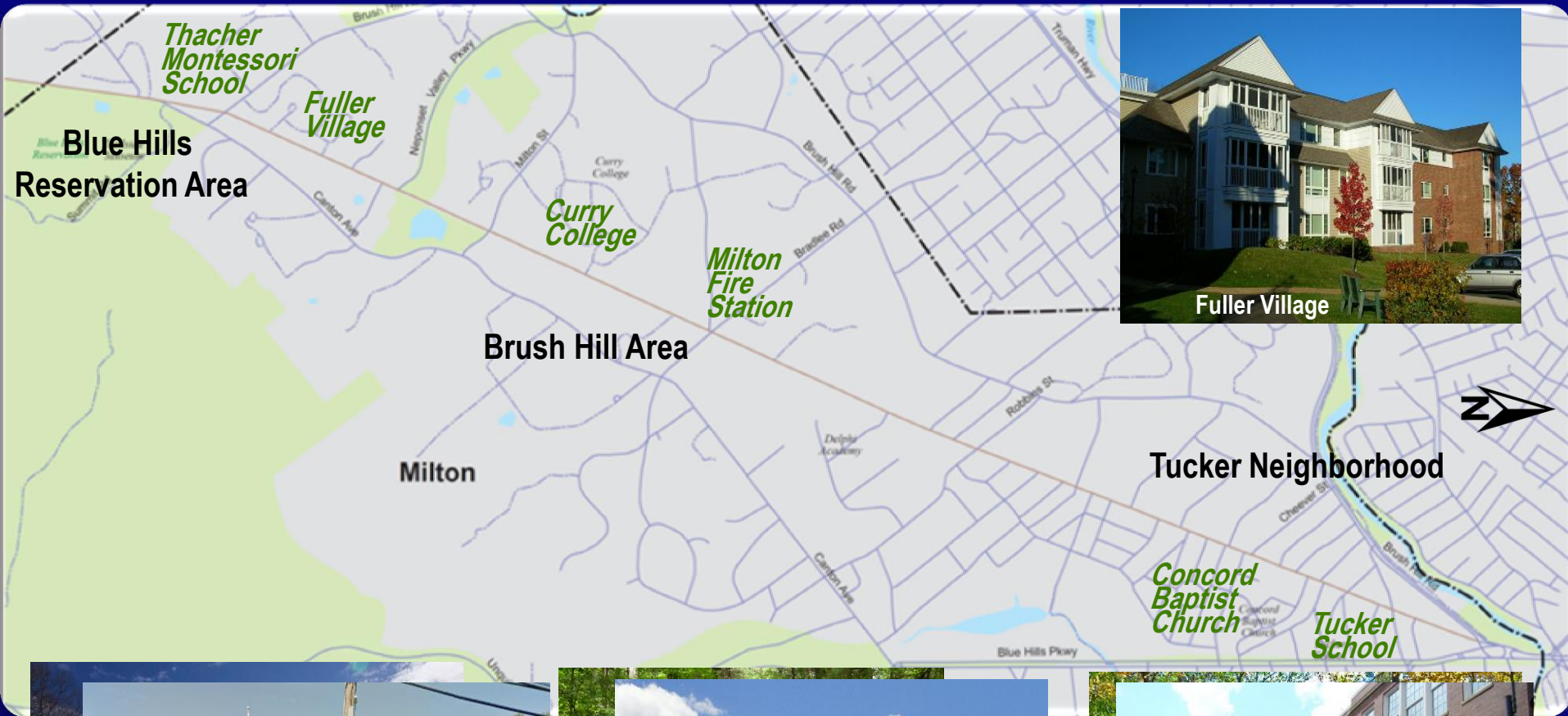
Blue Hills  
Reservation Area

Brush Hill Area

Tucker Neighborhood

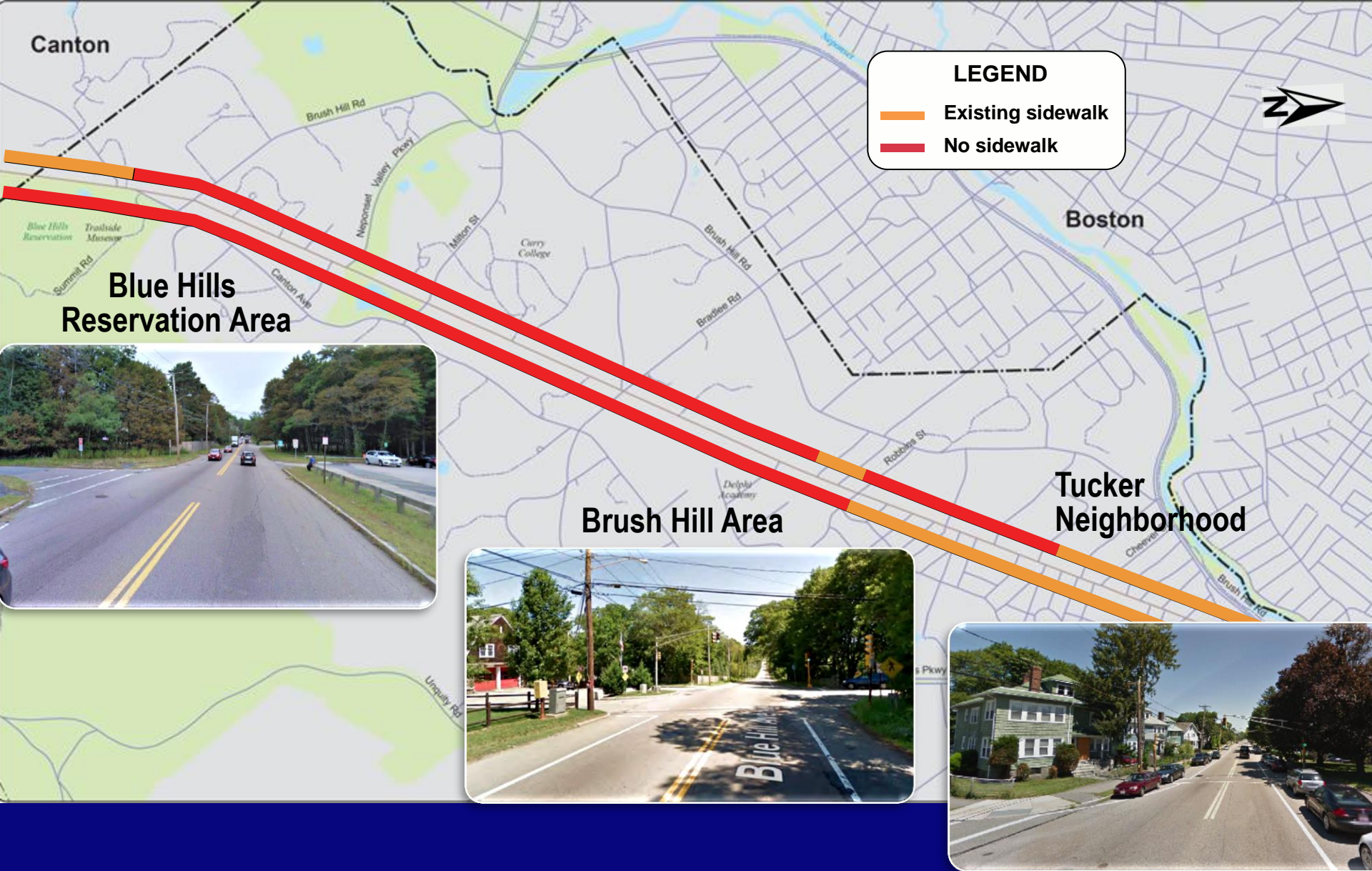


# Land Uses

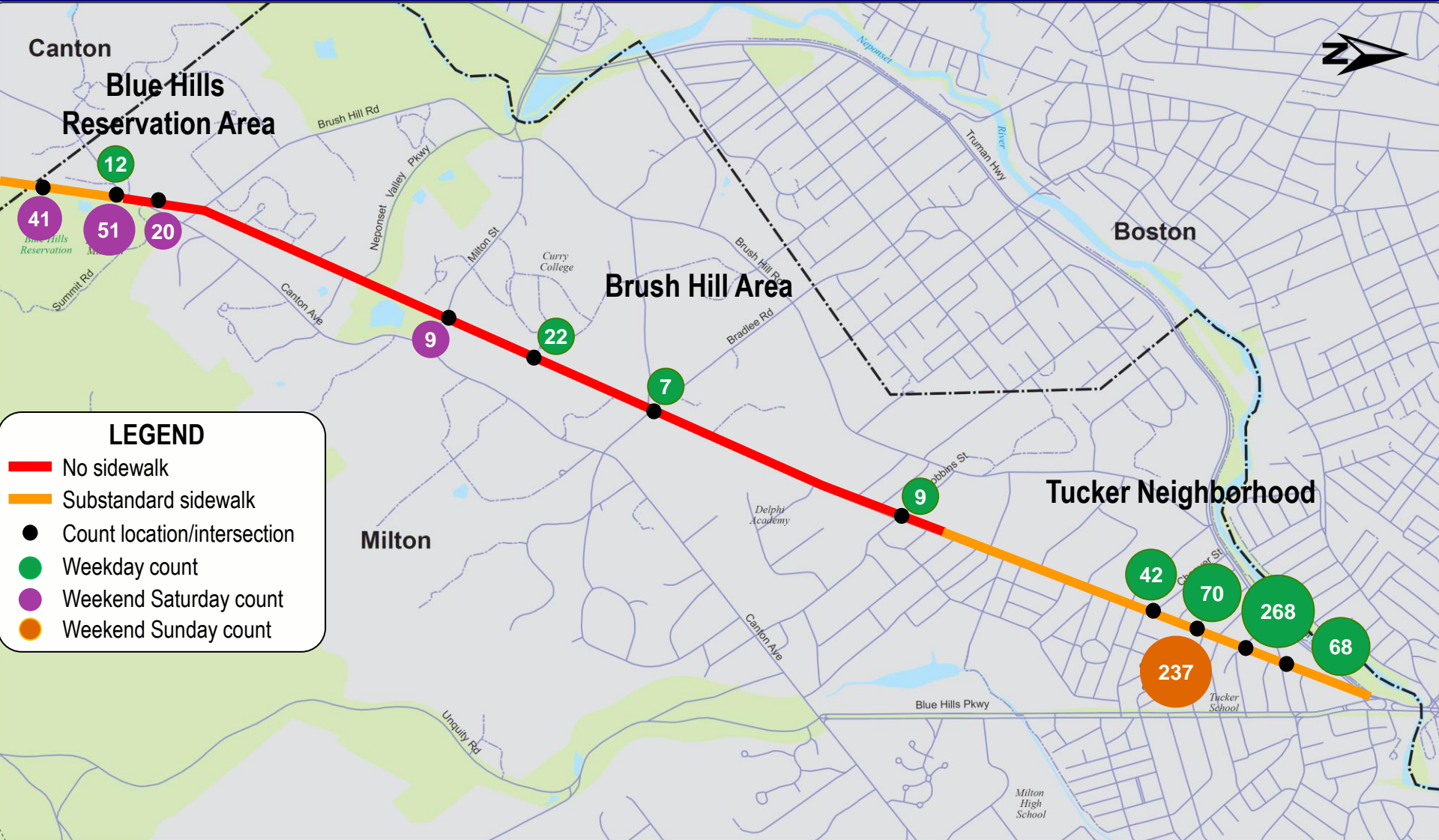


# Existing Conditions and Problems

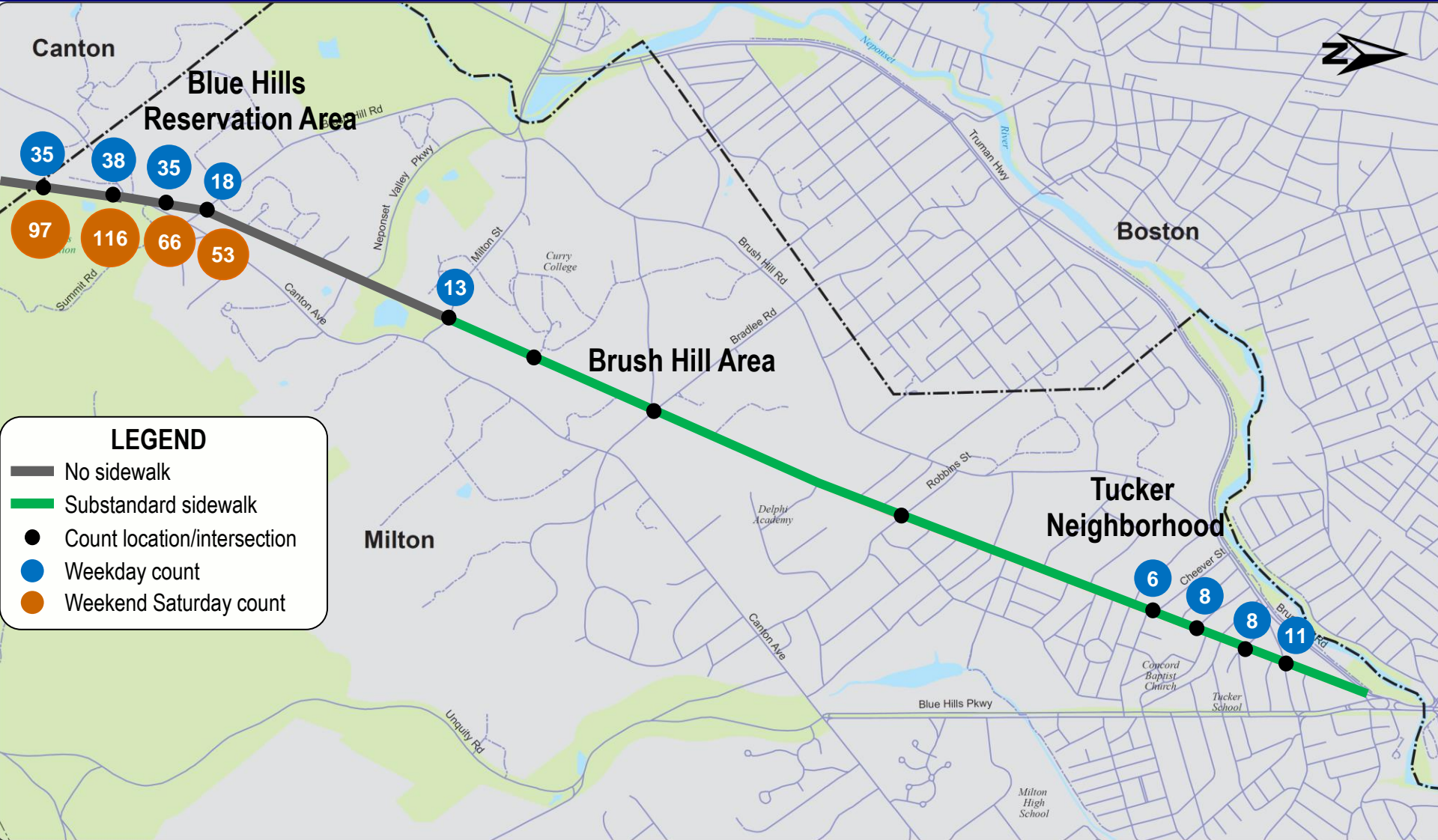
# Sidewalk Network



# Peak-Period Pedestrian Volumes

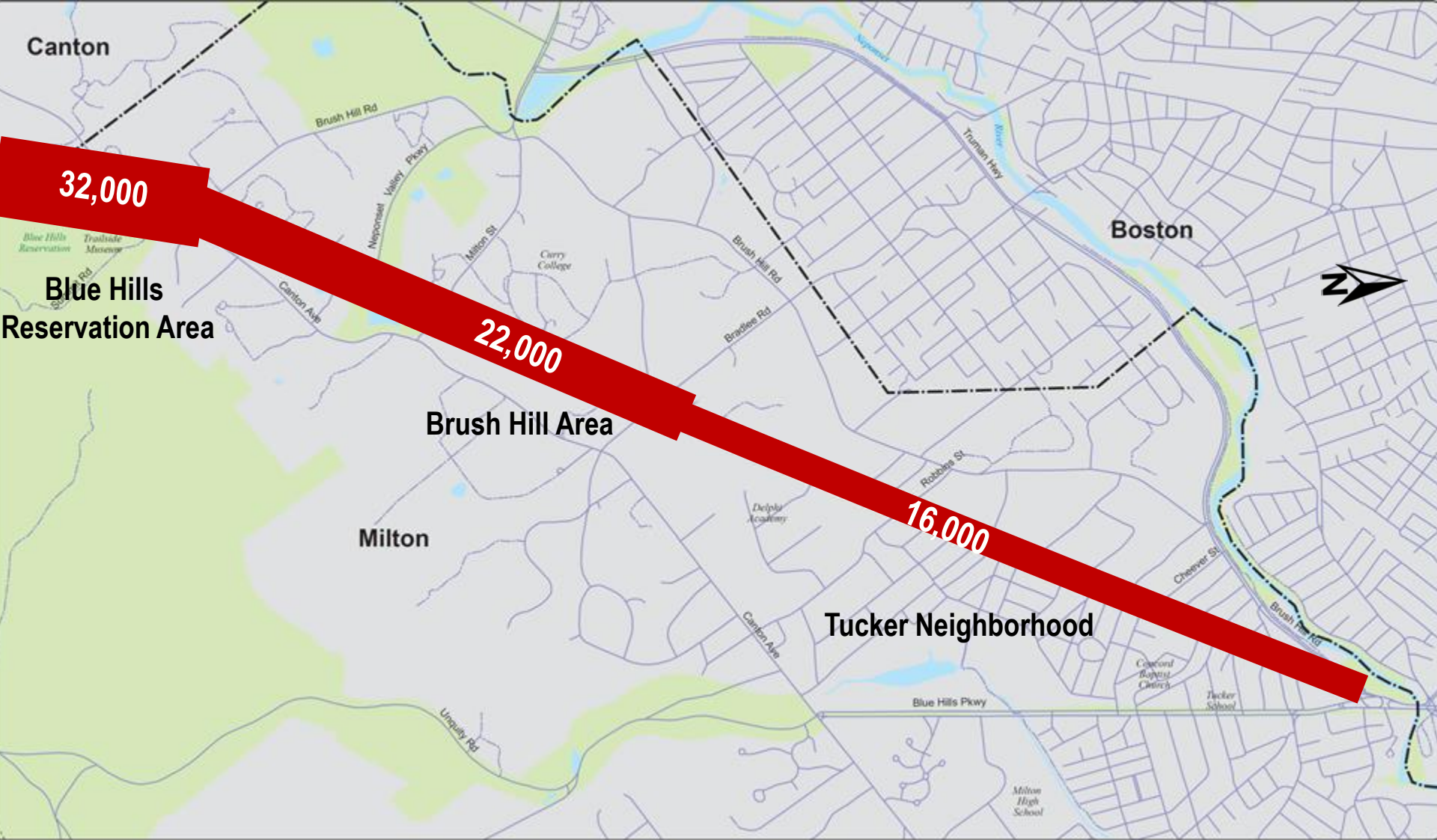


# Peak-Period Bicycle Volumes

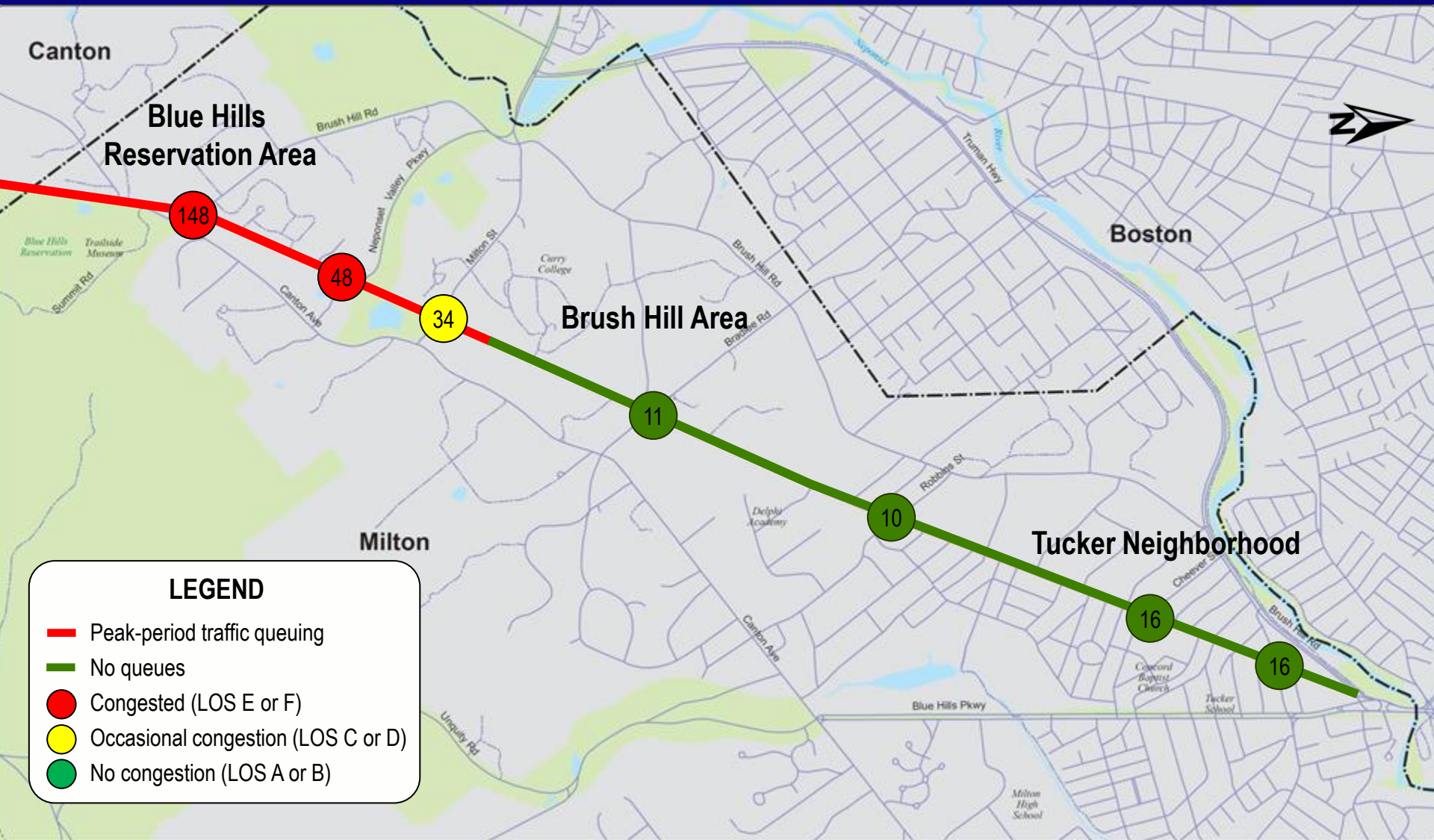




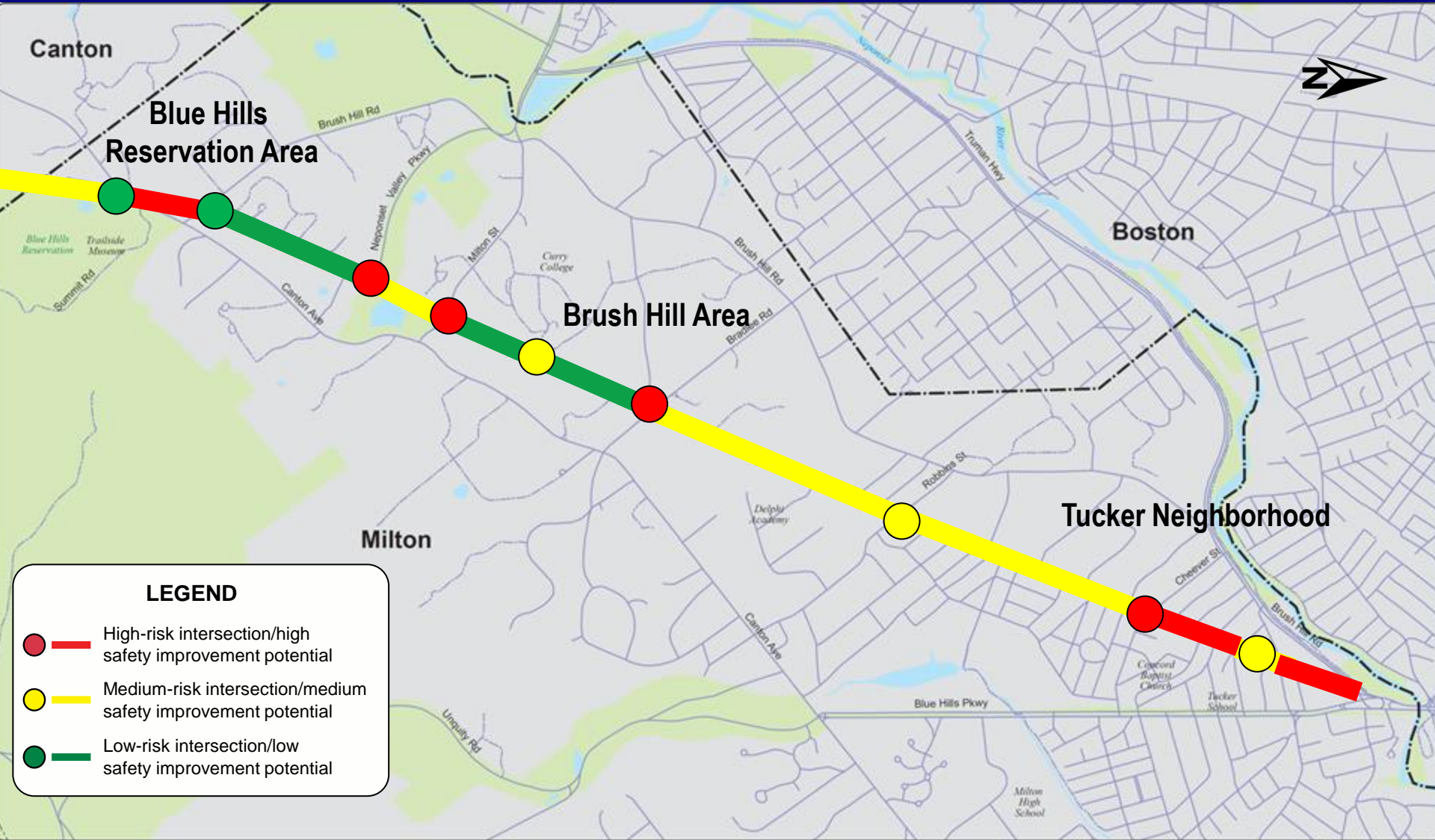
# Average Weekday Volumes



# Existing Congestion



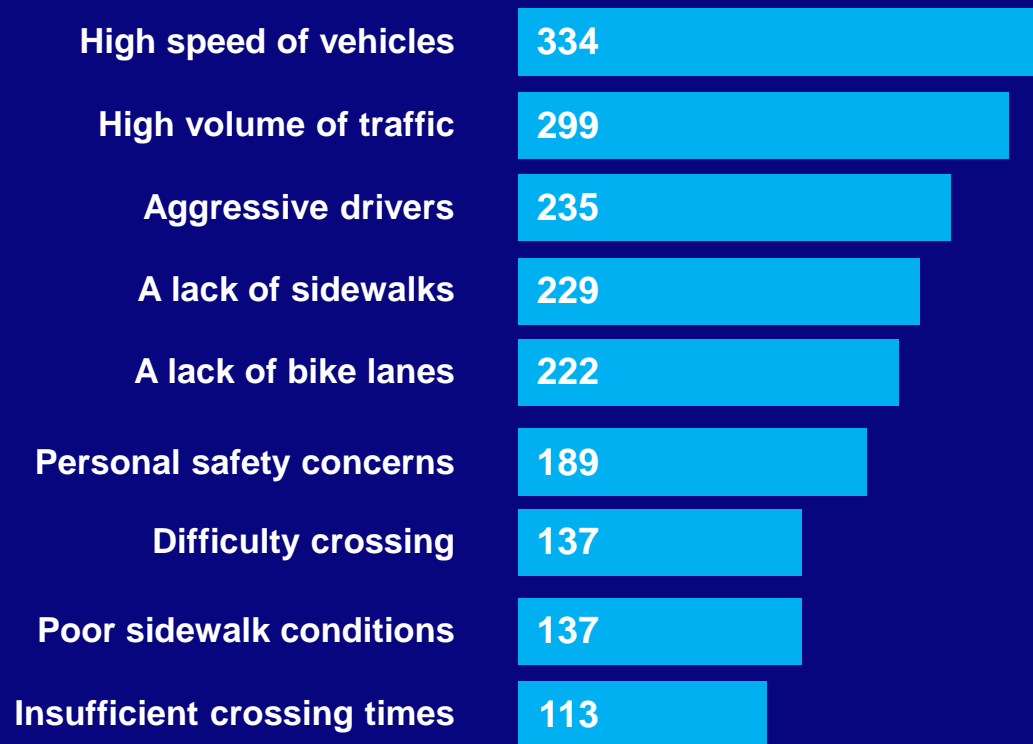
# Crashes



# Community Survey

## Walking and Bicycling

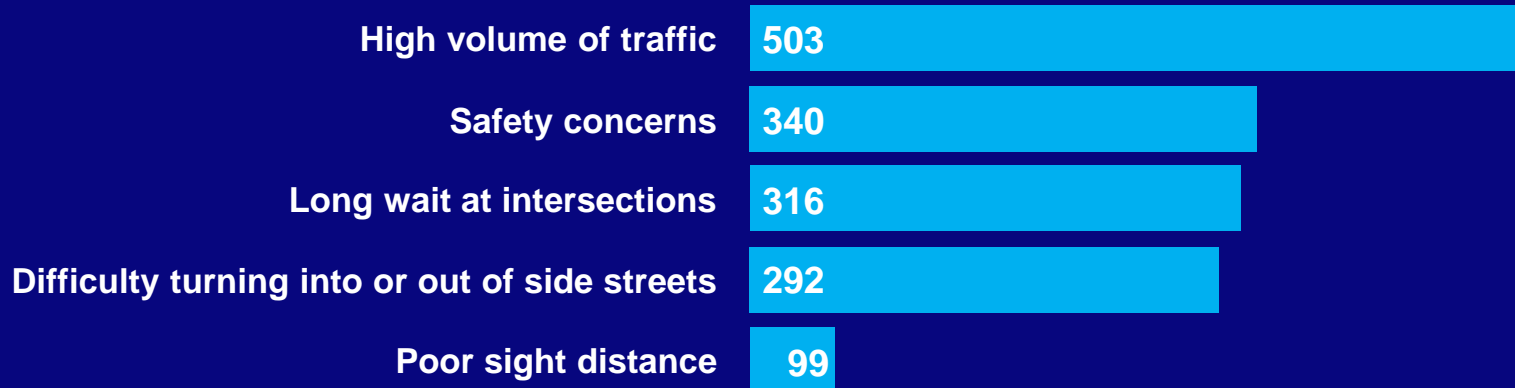
### Problems that keep you from bicycling or walking on Route 138



# Community Survey

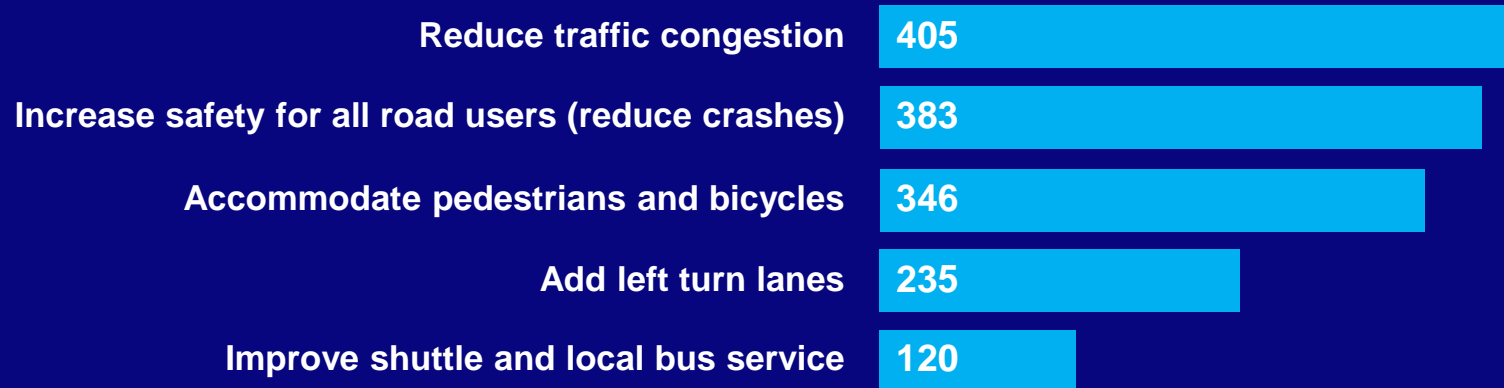
## Driving

### Problems you encounter when driving on Route 138



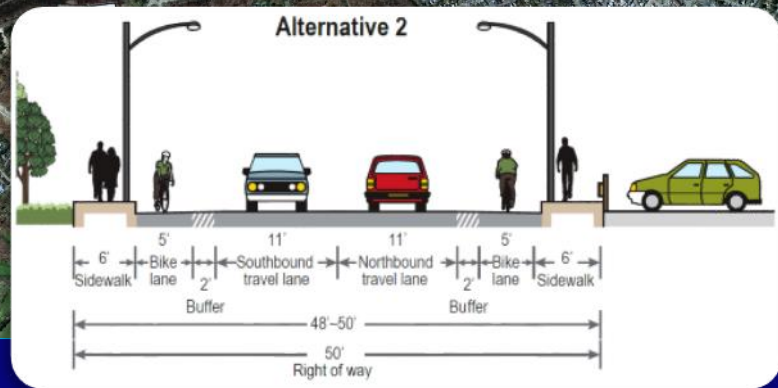
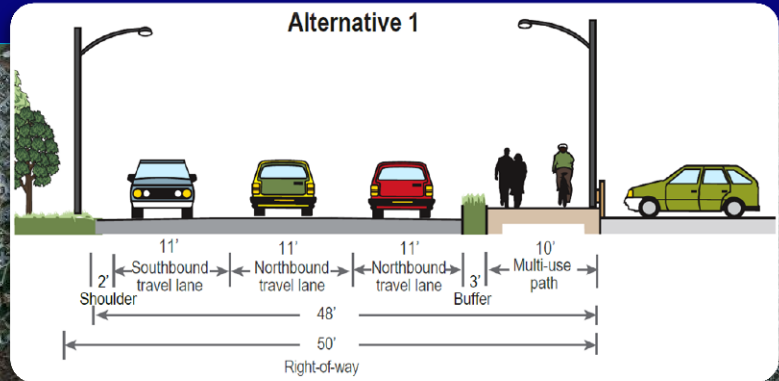
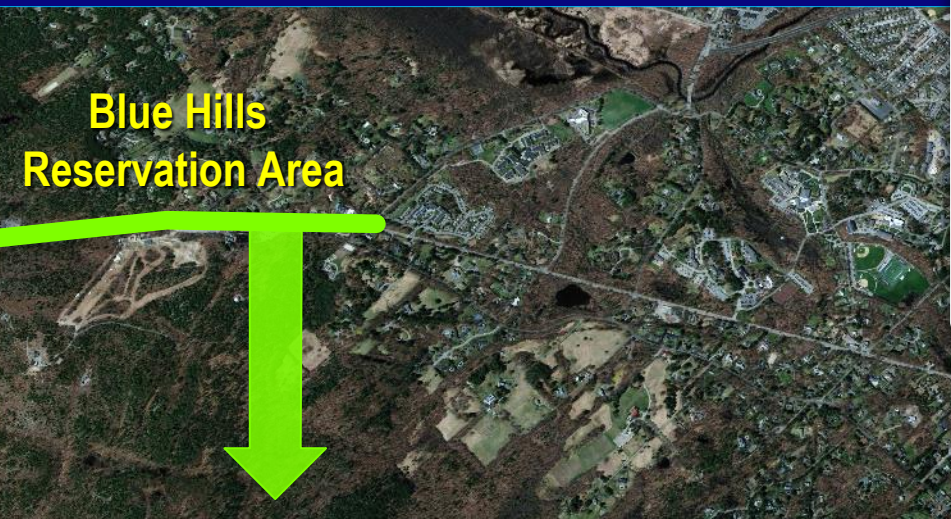
# Community Survey Improvements

## Operational improvements you would like to see implemented



# Improvement Concepts

# Blue Hills Area: Improvements





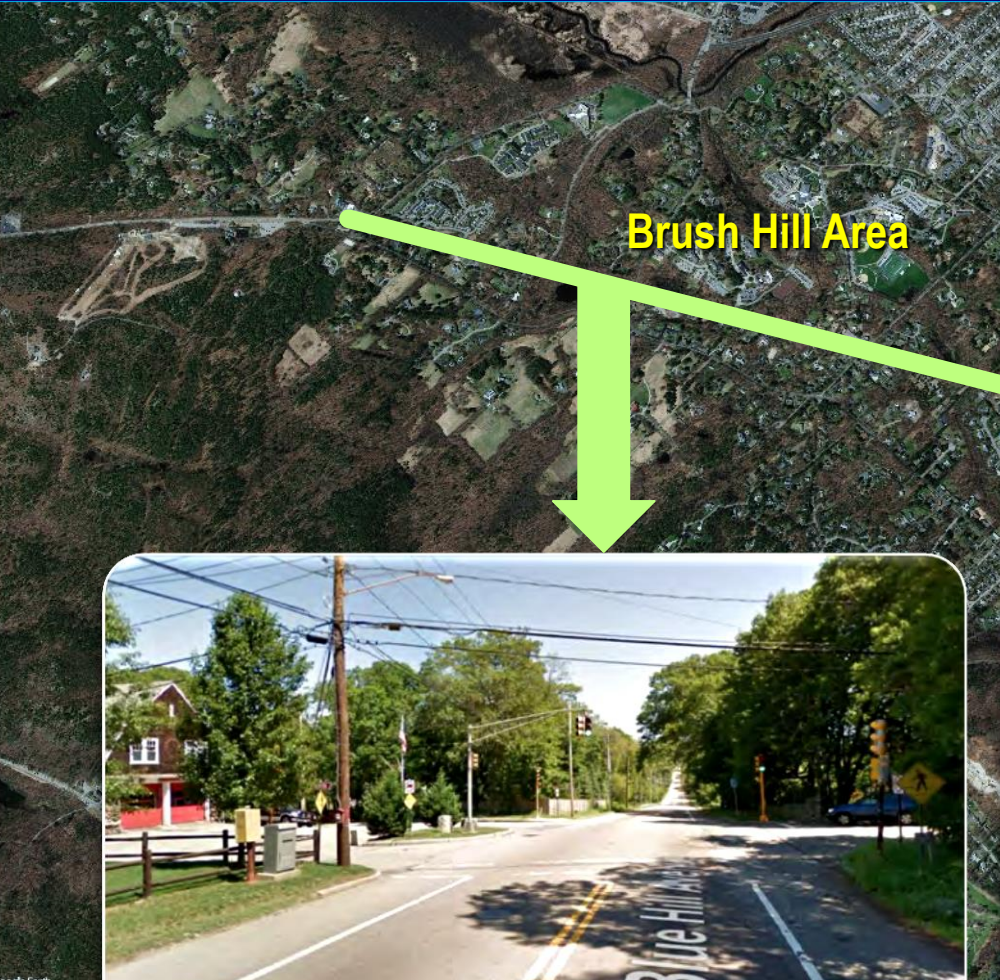
# Blue Hills Area: Alternative 1



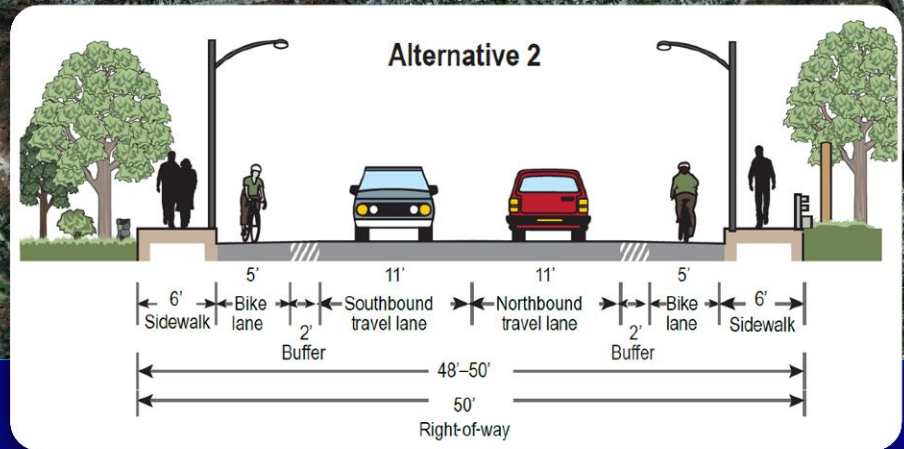
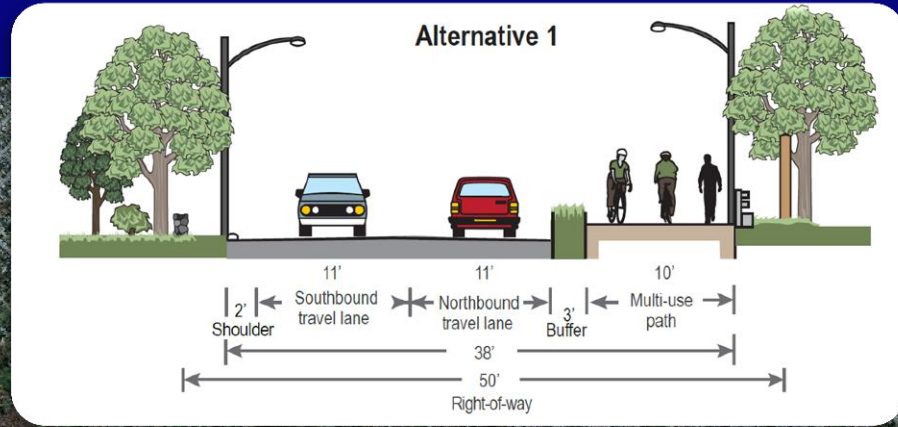
# Blue Hills Area: Alternative 2



# Brush Hill Area: Improvements



Brush Hill Area

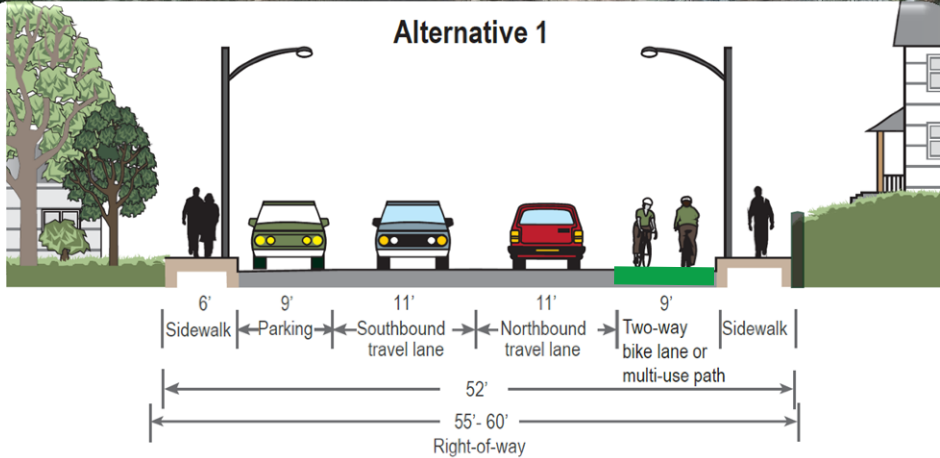


# **Brush Hill Area: Additional Improvements**

- **Add northbound left-turn lanes**
- **Install new traffic signal at Neponset Valley Parkway intersection**
- **Upgrade traffic signal equipment**
- **Create accommodation for pedestrians and bicycles**
- **Install (RED) SIGNAL AHEAD signs**

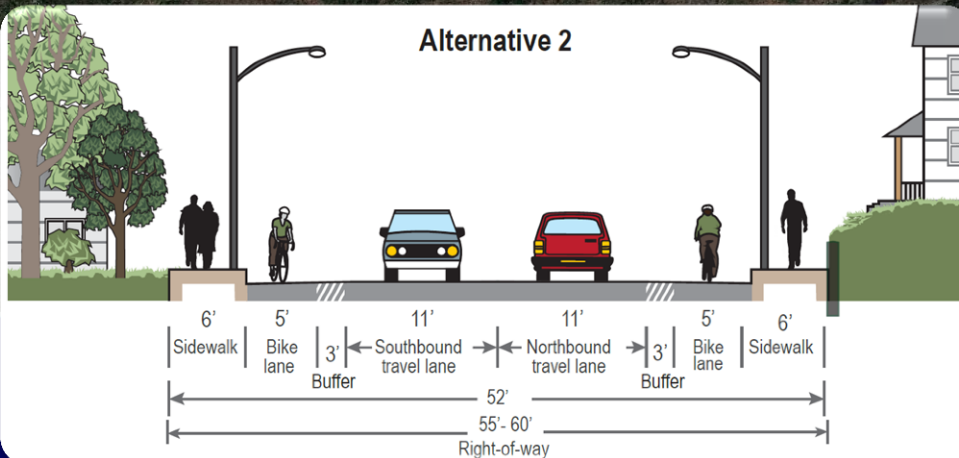
# Tucker Neighborhood

Alternative 1

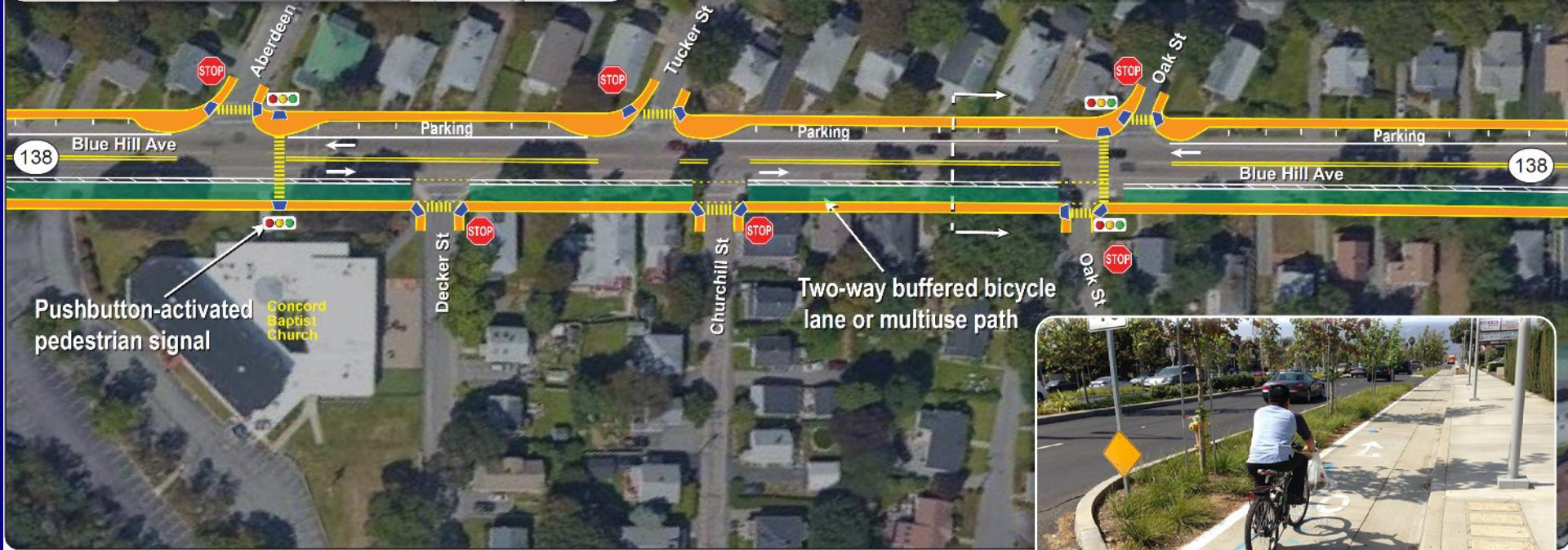


Tucker Neighborhood

Alternative 2



# Tucker Neighborhood: Alternative 1



# Benefits of the Study

- **Enhances multimodal transportation**
- **Increases safety for all users**
- **Improves traffic operations**
- **Closes gaps in the sidewalk and bicycle networks**

# Pedestrian Report Card Assessment

Grading Categories	Existing Conditions		Future Conditions	
	Score	Rating	Score	Rating
Safety	2.4	Good	2.8	Good
System Preservation	N/A	Fair	N/A	Good
Capacity Management and Mobility	1.5	Poor	2.7	Good
Economic Vitality	1.5	Poor	2.5	Good



# Conclusions and Next Steps

- Provides Milton and MassDOT with Complete Streets improvement concepts
- Aligns with the MPO's goals
- Implementation of the improvements

**Thank You!**

**Questions and Comments?**