

Construction

Bicycle Network and Pedestrian Connections

Cambridge- New Bridge and Shared-Use Path Construction over Fitchburg Line at Danehy Park Connector

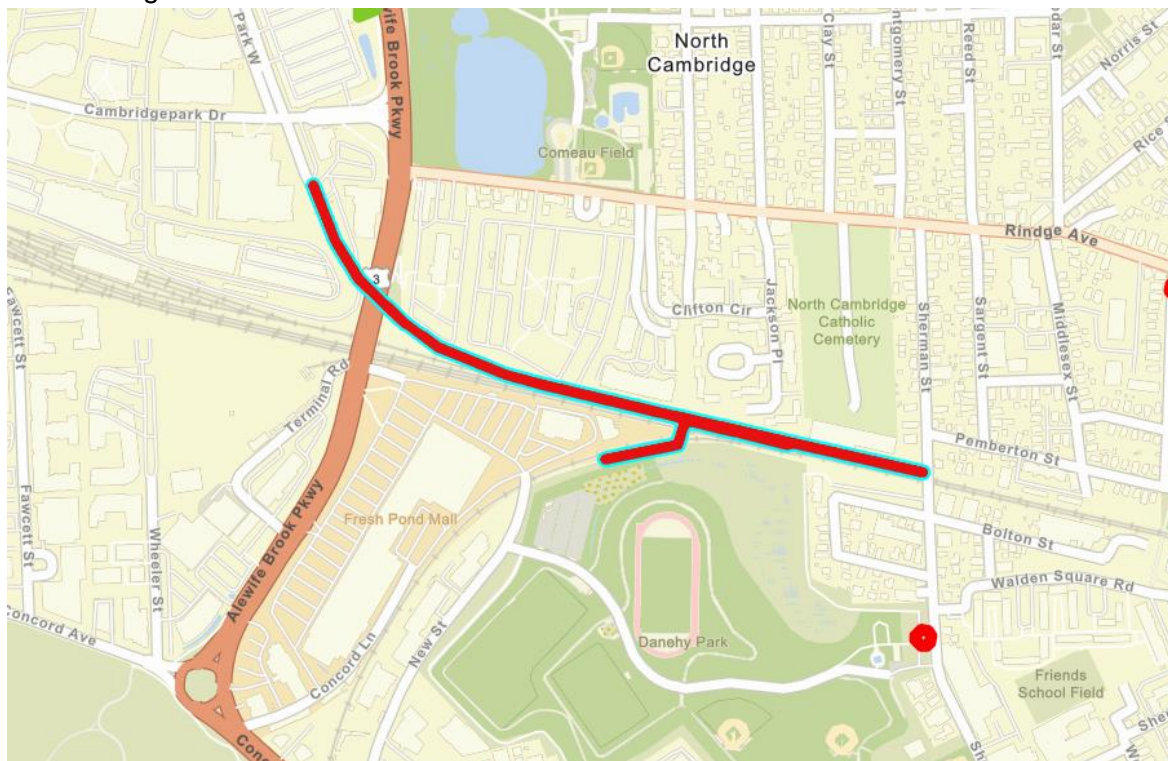
Project Number: 613568

Project Cost: \$18,238,535

Score: 81

Project Description:

- This project will construct a new bridge carrying a shared-use path over the MBTA Fitchburg Line between New Street and Sherman Street. The path will connect to Danehy Park, Sherman Street, Alewife Station, and the North Cambridge residential neighborhoods.



Concord- Assabet River Multi-Use Trail and Bridge Construction

Project Number: 612870

Project Cost: \$9,604,800

Score: 55.9

Project Description:

- This project will construct a new bridge carrying a shared-use path over the Assabet River, connecting the West Concord Commuter Rail station and the Bruce Freeman Rail Trail with a nearby office park.



Needham- Newton- Bridge Replacement on Christina Street

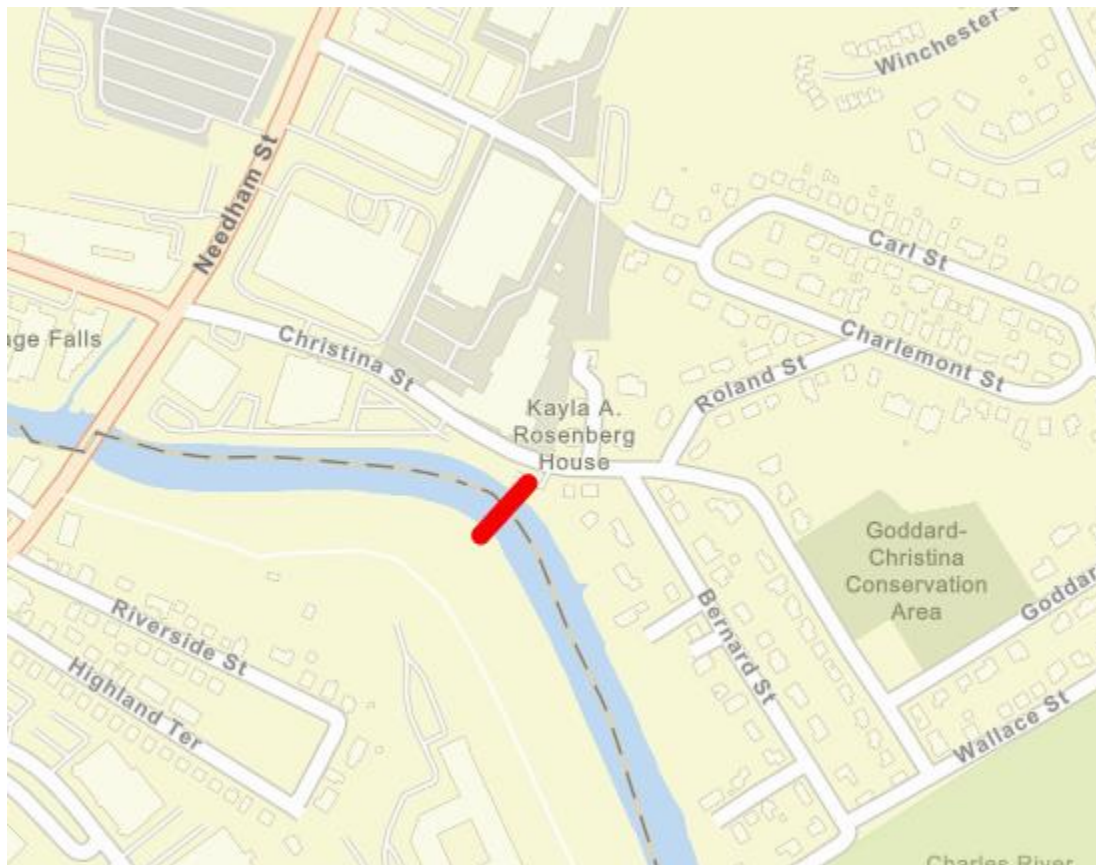
Project Number: 613594

Project Cost: \$5,551,514

Score: 66.4

Project Description:

- This project will replace a deteriorating railroad bridge over the Charles River. The new bridge will carry a shared-use path connecting Christina Street on the Newton side with the Blue Heron Trail on the Needham side.



Complete Streets

Bolton- Reconstruction of Route 117 (Main Street) from 200 ft west of John Powers Lane to the Intersection of Mechanic Street including Culvert Replacement

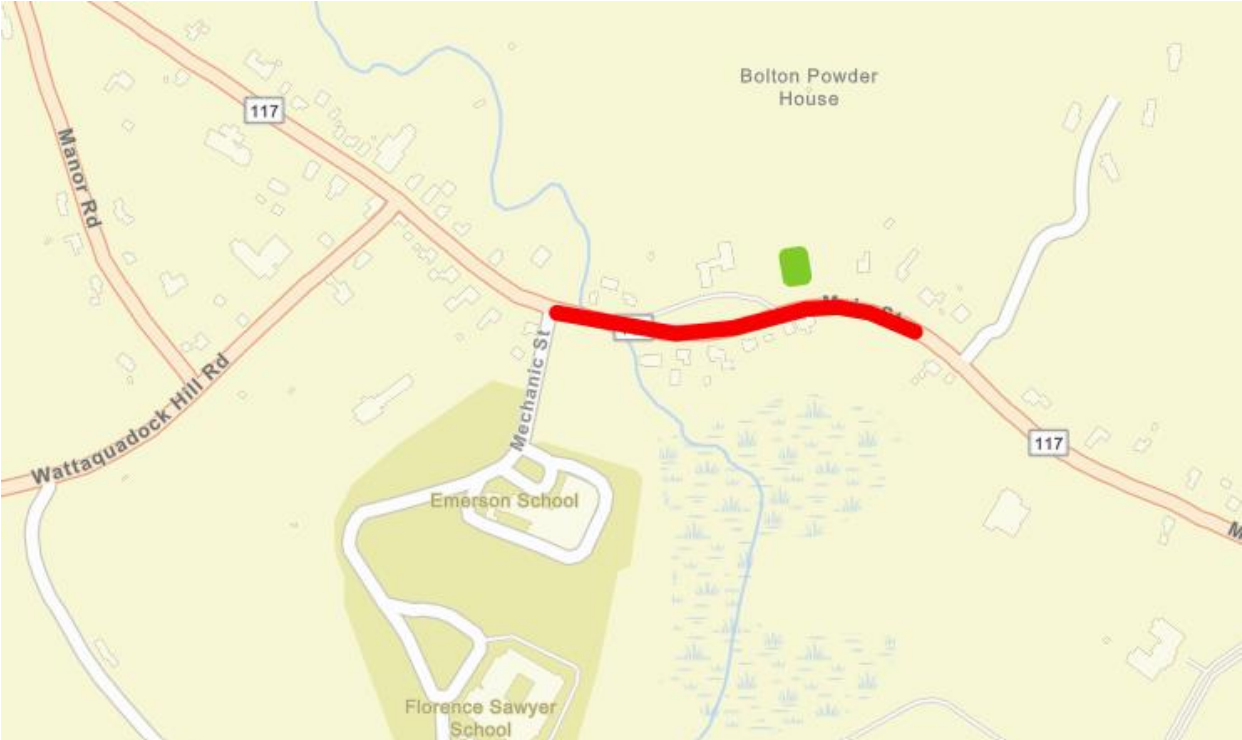
Project Number: 613885

Project Cost: \$8,698,405

Score: 47.2

Project Description:

- This project will improve pedestrian and bicycle facilities along Route 117, a high-traffic corridor and Bolton’s Main Street. A culvert carrying a perennial stream called the Great Brook under the roadway will be replaced, and the portion of the culvert that runs under nearby residential properties will be daylighted.



Chelsea- Everett- Reconstruction of Vine Street and Third Street, from Chelsea Street to MBTA Station

Project Number: 613585

Project Cost: \$13,119,298

Score: 67.1

Project Description:

- This project will construct sidewalks and raised bicycle lanes on Vine Street and Third Street, creating a safe pedestrian and bicycle connection to the Silver Line MBTA stop and the Chelsea Commuter Rail station.



Framingham- Preliminary Design of Intersection Improvements at Route 126/135/MBTA & CSX Railroad

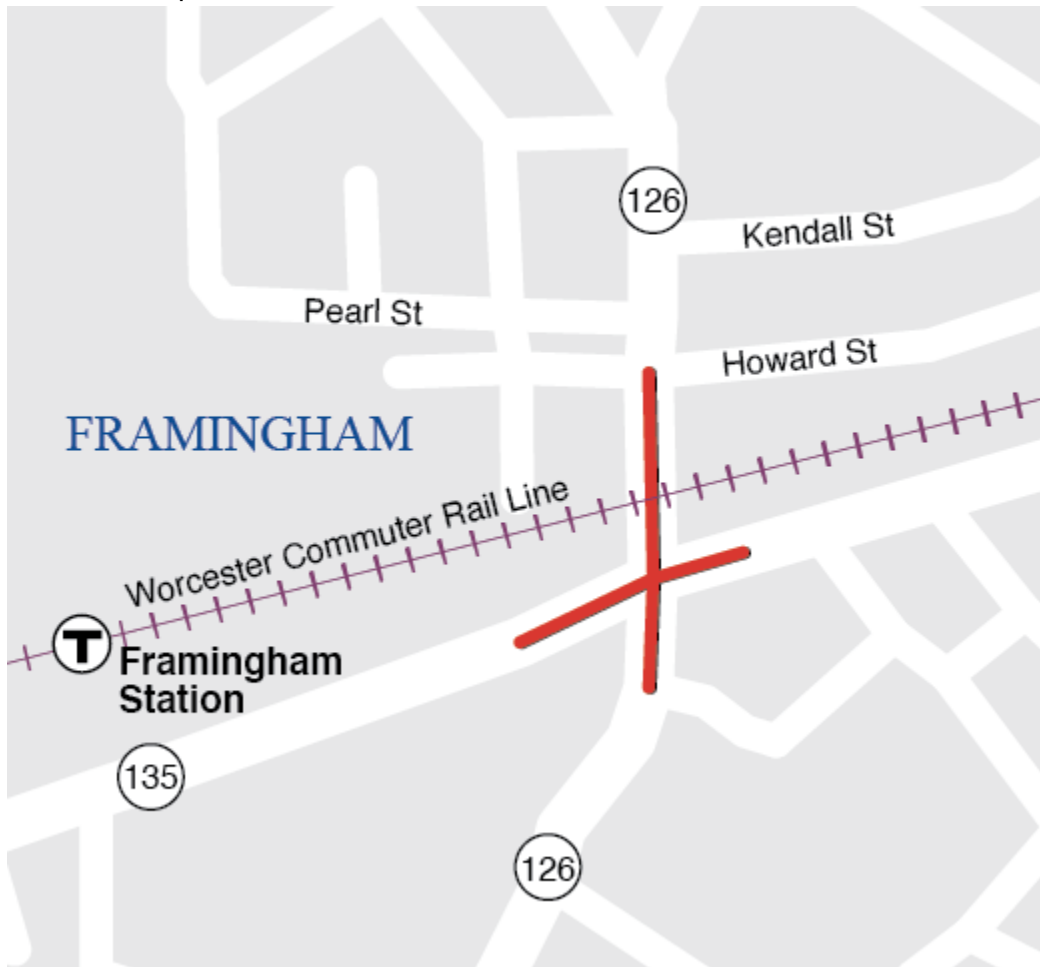
Project Number: S12977

Project Cost: \$1,400,000

Score: TBD

Project Description:

- This project provides design funding for an initial stage of a major intersection improvement project at Route 126 and 135 and the MBTA and CSX railroad tracks. Design funding will be used to develop and identify alternatives to address congestion at the location, including possibility of grade crossing removal. This project would advance the design for a separate project #606109, and is also listed in the MPO's Long Range Transportation Plan, Destination 2050.



Lexington- Roadway Reconstruction on Hartwell Avenue and Bedford Street

Project Number: 613695

Project Cost: \$46,195,840

Score: 73.2

Project Description:

- This project will reconstruct Hartwell Ave between Wood St and Bedford Street, Bedford Street between Hartwell Ave and the I-95 on-ramps, and the jughandle used to turn left onto Hartwell Ave from Bedford Street. Sidewalks and protected bike lanes will be constructed throughout the project limits.



Lexington- Design of Safety Improvements at the Interstate 95 and Route 4/225 Interchange

Project Number: S12978

Project Cost: \$1,650,000

Score: TBD

Project Description: This project provides design funding for an initial stage of improvements at the Interstate 95 and Route 4/225 Interchange in Lexington. The design will investigate and develop improvements at the interchange that, when implemented, will enable further traffic-calming work to be conducted on Route 4/225, Hartwell Avenue, and Wood Street. This project is listed in the MPO's Long Range Transportation Plan, Destination 2050.



Marblehead- Village Street Bridge Replacement M-04-001

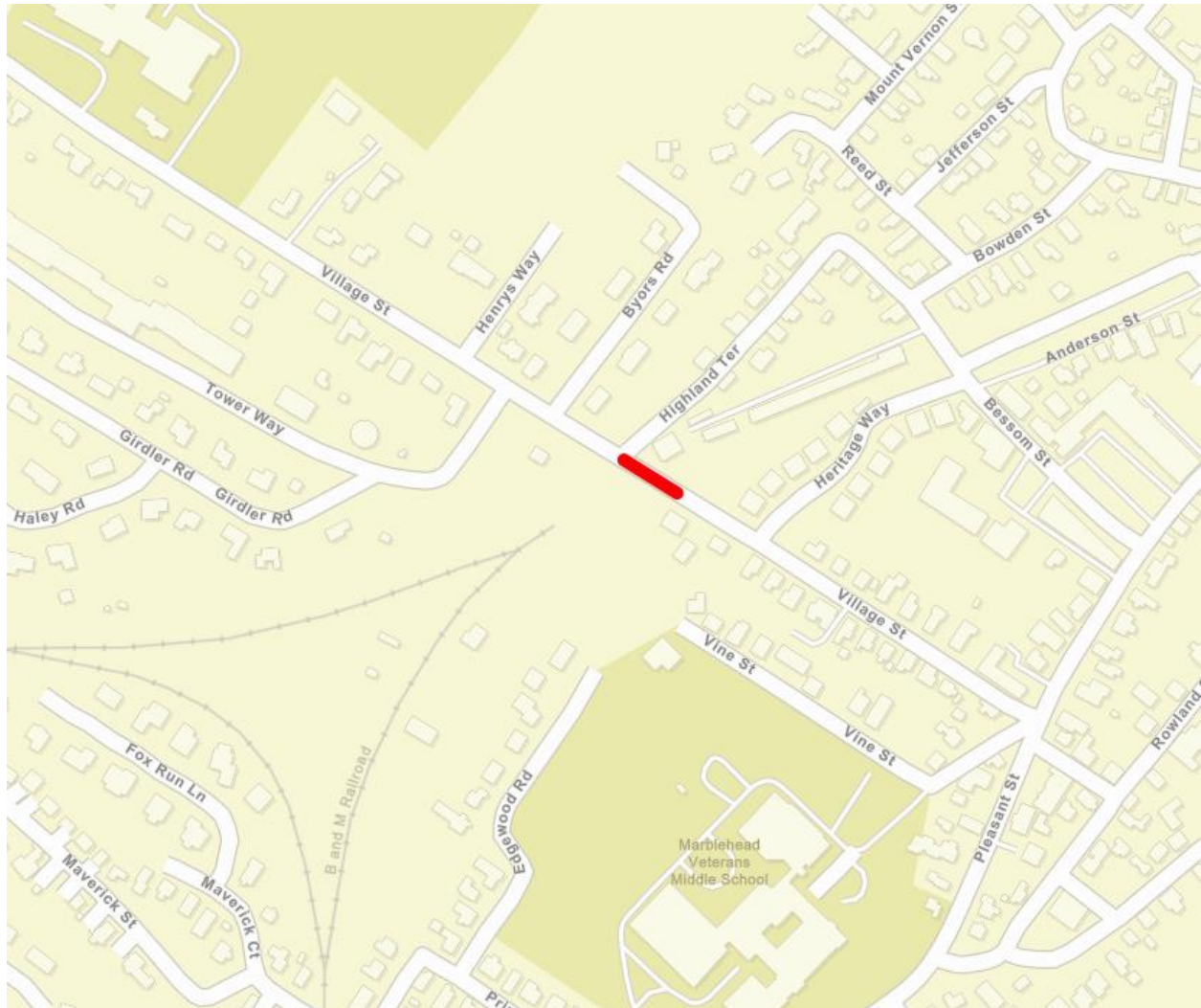
Project Number: 612947

Project Cost: \$5,166,582

Score: 38

Project Description:

- This project will replace the aging bridge on Village Street over the Marblehead Rail Trail and add an ADA compliant pedestrian ramp from Village Street to the Rail Trail.



Melrose- Lebanon Street Improvement Project

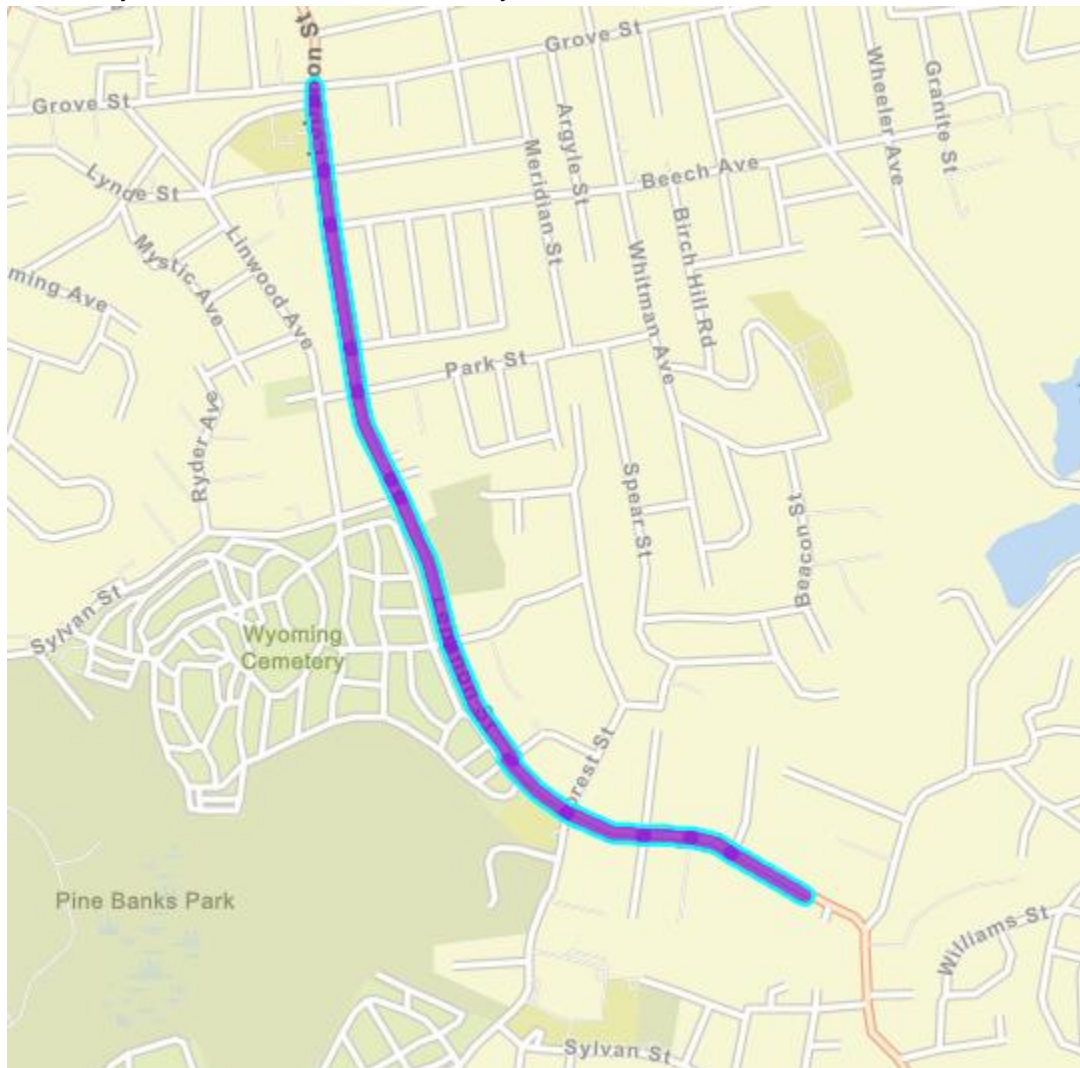
Project Number: 612534

Project Cost: \$10,528,000

Score: 55.8

Project Description:

- This project will improve pedestrian and bicycle infrastructure on Lebanon Street from Lynde Street to the Malden City Line.



Needham- Reconstruction of Highland Avenue, from Webster Street to Great Plain Avenue

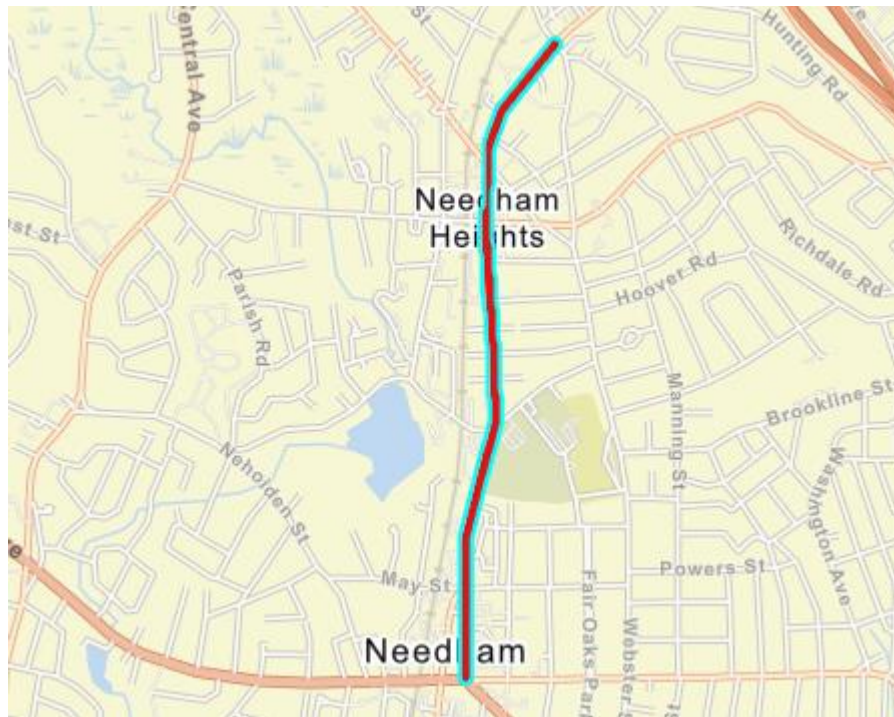
Project Number: 612536

Project Cost: \$15,776,000

Score: 62.4

Project Description:

- This project will construct bicycle lanes and ADA-compliant sidewalks on Highland Ave. Other proposed improvements include repaving and restriping of the roadway, construction of drainage infrastructure, and upgrades to intersections along the corridor.



Intersection Improvements

Wenham- Safety Improvements on Route 1A

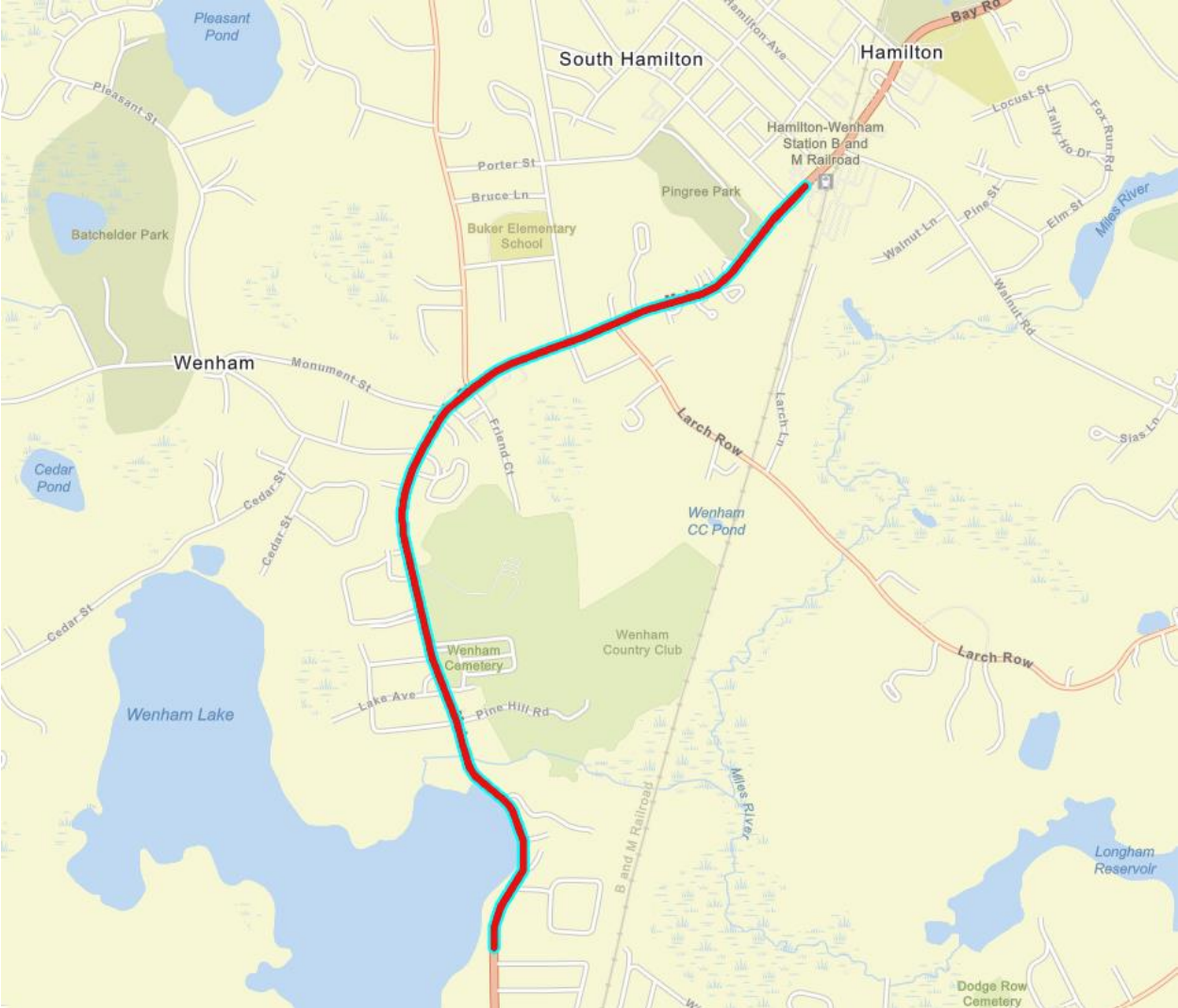
Project Number: 609388

Project Cost: \$5,337,157

Score: 35.2

Project Description:

- This project will construct sidewalks and painted bicycle lanes on Route 1A from the Beverly City Line to the Hamilton Town Line. Traffic signals will be installed at the intersections of Route 1A / Arbor Street and Route 1A / Cherry Street.



Transit Transformation Program

CATA- Automatic Passenger Counting and Automatic Vehicle Location Deployment

Project Number: S13202

Project Cost: \$680,000

Score: 29.4

Project Description: This project will fund a GPS/AVL system that includes public facing information, automatic passenger counters, and automated stop announcements with visual displays.

MWRTA- Procurement of Six 29-Foot Buses

Project Number: S13186

Project Cost: \$4,200,000

Score: 52.6

Project Description:

- This project will support the procurement of six fully accessible 30-foot compressed natural gas (CNG) transit buses to support MWRTA's highest passenger routes. MWRTA will deploy three vehicles in the coming year and will utilize the remaining three vehicles in future years as it continues to expand available service offerings. Additional funds will be invested in the acquisition of parts and equipment, including bus accessories and workforce development.

[MAP = MWRTA SERVICE AREA]

MWRTA- Blandin Hub Redesign Initiative

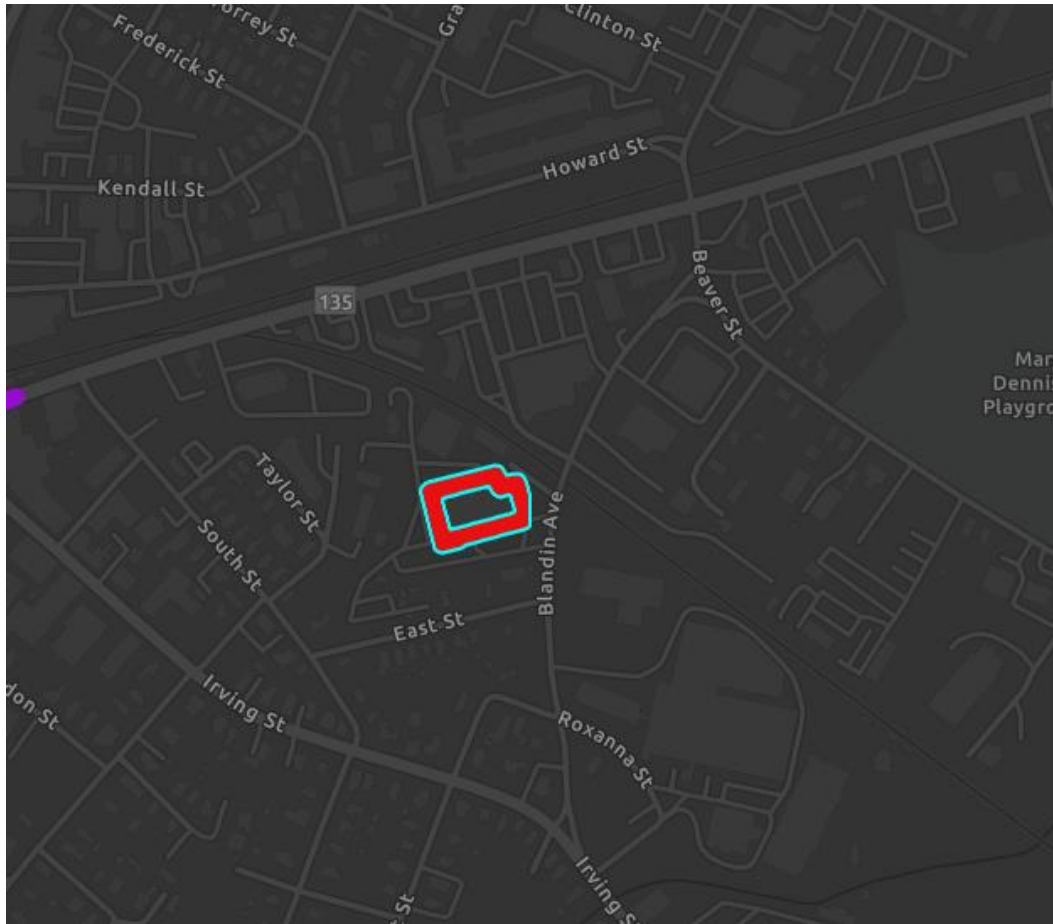
Project Number: S13185

Project Cost: \$12,500,000

Score: 64

Project Description:

- This project will construct improvements to the MetroWest Regional Transit Authority's Blandin Hub facility, the MWRTA's primary operations and maintenance building and a key passenger transportation hub. The Blandin Hub will be upgraded to feature an ADA-accessible driver dispatch and driver area within the operations facility. The project includes upgrades to electrical systems and HVAC energy recovery, restrooms, and driver amenities for a new training facility and expanded vehicle bays. The design will expand the customer waiting and transfer area to include a weather-enclosed waiting space in addition to other rider amenities.



MBTA- Better Bus Project - Operational Safety Improvements at Bus Stops

Project Number: S13152

Project Cost: \$5,500,000

Score: 44.6

Project Description:

- As part of the MBTA Better Bus Project, this project will make operational safety improvements at bus stops along the 714 and 716 bus routes. The MBTA will build or improve bus stop curbs, sidewalks, signage, markings, and shelters, accessibility and customer experience where conditions are unsafe, inaccessible, in poor state of operation or repair, or where bus stops do not exist at all.

MBTA- Wellesley Station Upgrades

Project Number: S13158

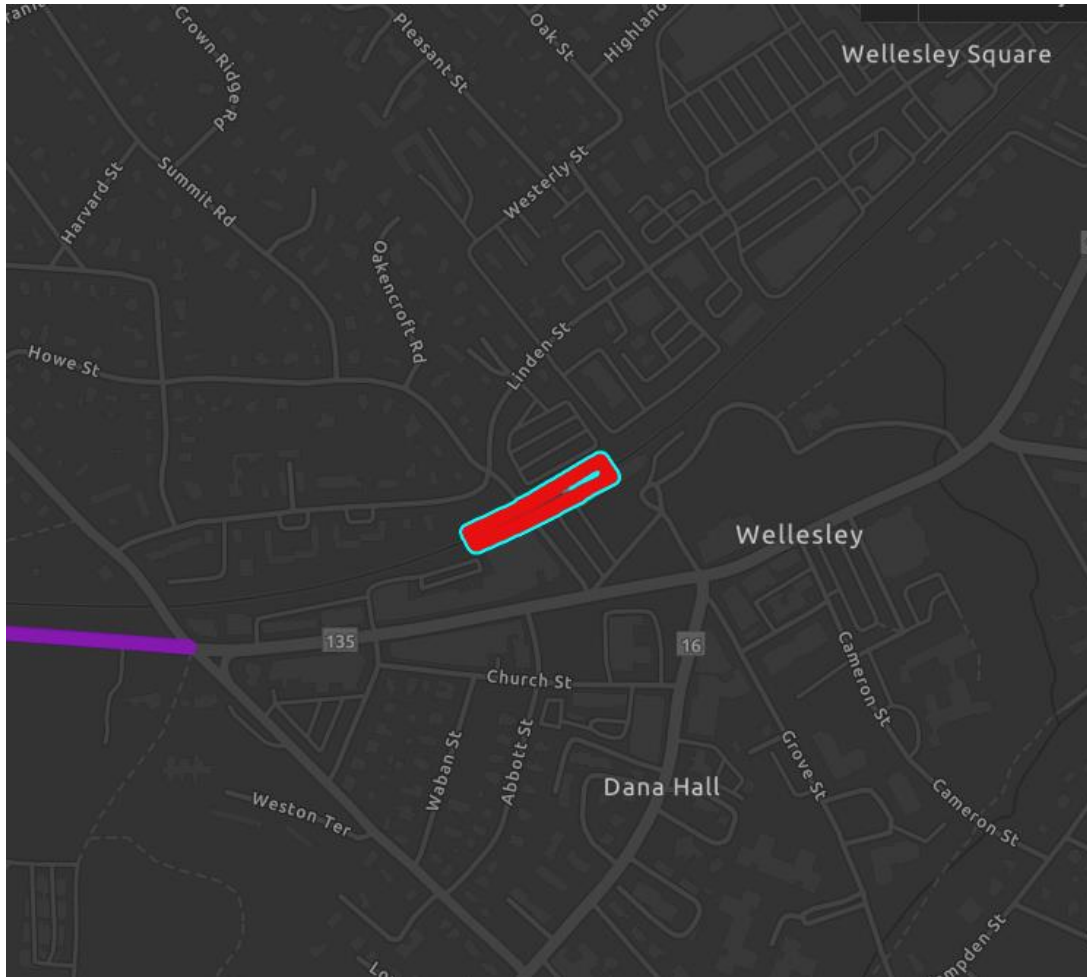
Project Cost: \$5,000,000

Score: 43.6

Project Description:

- This request will supplement existing funding to provide an accessible connection between the inbound and outbound platforms at Wellesley Square. The FTA has asked for this connection, which will be designed and constructed to generally accommodate

any future station accessibility improvements (as are in the scope of the Worcester Triple Track project). The station is receiving free-standing mini-high platforms under an existing project. The MBTA is engaging with the municipality on design.



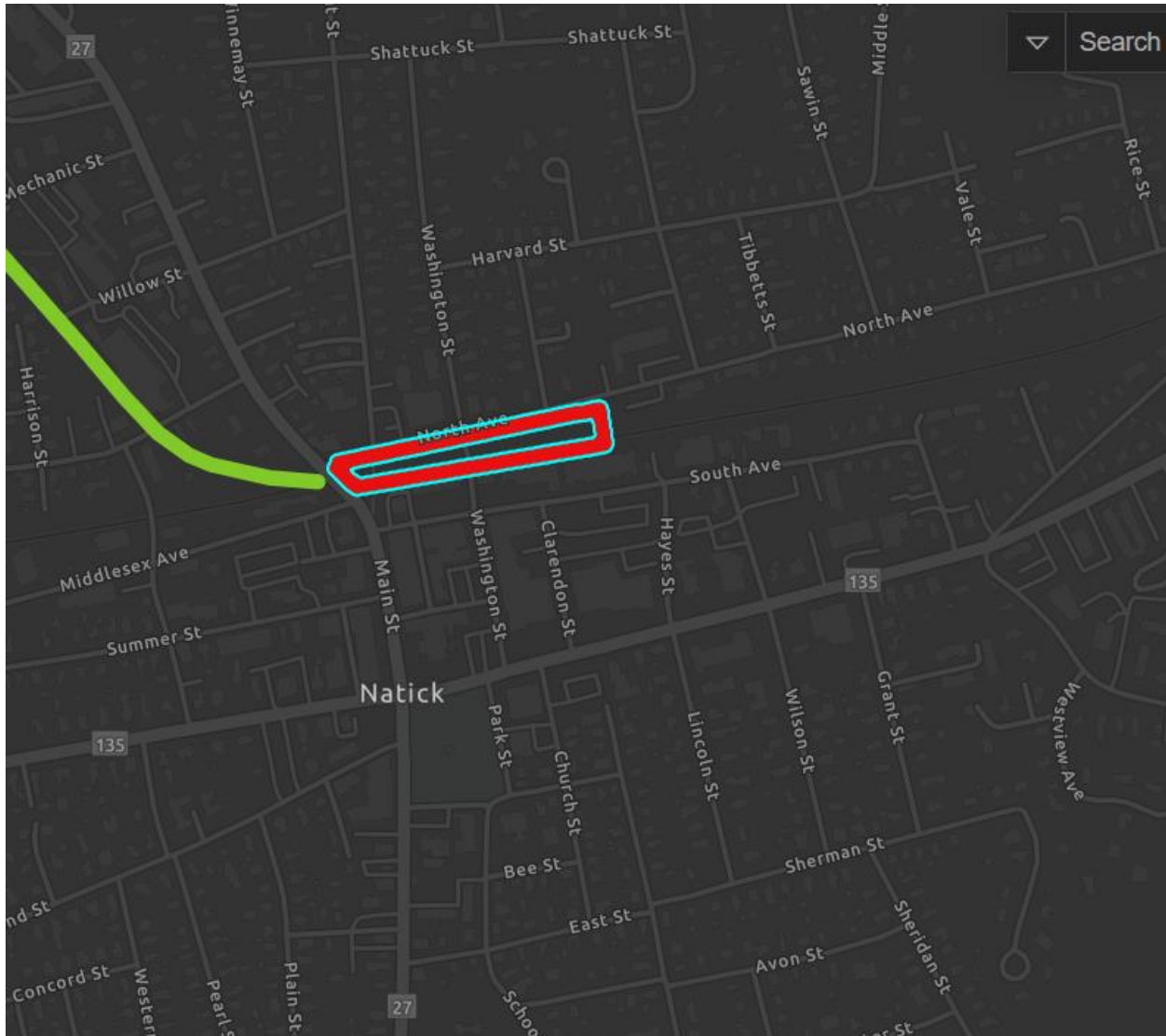
MBTA- Natick Center Station Accessibility Improvements

Project Number: S13154

Project Cost: \$2,500,000

Score: 53.6

Project Description: The Natick Center Station Accessibility Improvement project involves the construction of full-length, high-level platforms, an ADA-compliant pedestrian bridge, upgraded amenities and wayfinding signage, and a direct connection to the Cochituate Rail Trail. This line item would cover additional funding required to complete construction.



MBTA- Beverly Depot Pedestrian Grade Crossing Elimination

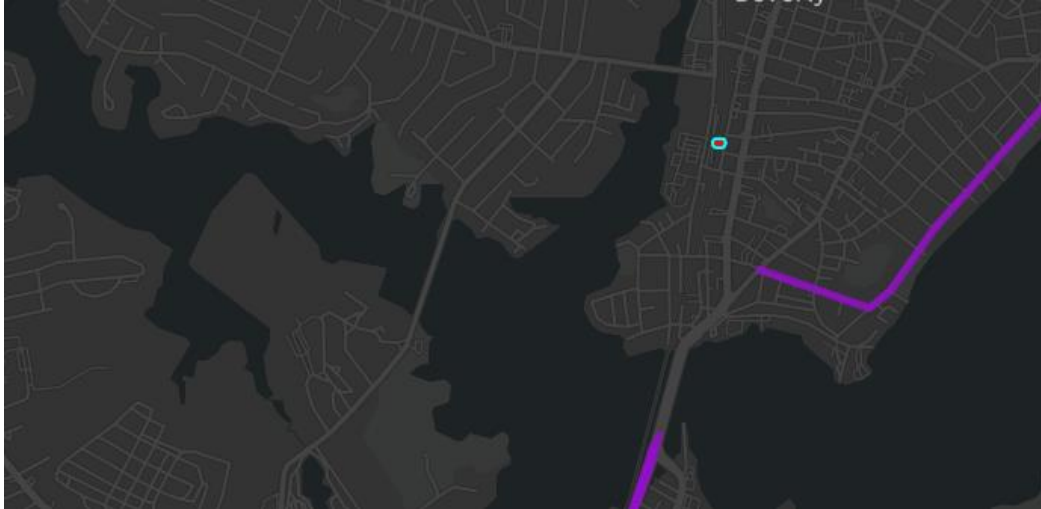
Project Number: S13155

Project Cost: \$15,000,000

Score: 38

Project Description:

- This project will provide funding to complete construction of signal improvements around Beverly Station necessary for 20-minute bi-directional headways on the Newburyport Rockport Line. In addition, the pedestrian grade crossing at Beverly Station will be eliminated.



MBTA- Bus Priority and Accessibility Improvements

Project Number: S13153

Project Cost: \$1,000,000

Score: 48

Project Description:

- This program addresses accessibility and safety improvements throughout the MBTA bus system.

[Map: MBTA service area]

MBTA- Catamaran Overhaul

Project Number: S13200

Project Cost: \$2,634,000

Score: 25

Project Description:

- This project will overhaul two catamaran ferries, the M/V Flying Cloud and Lightning. These vessels were procured in 2002, and the overhaul will ensure another 20-30 years of useful life. The overhauls have been previously funded through the MBTA CIP, however the M/V Lightning had sustained damage only revealed once repairs were underway, which increased the project scope and cost. This request will full fund the overhauls, and make them available for key MBTA ferry routes including Hingham. The total project cost (including the proposed TIP funding) is approximately \$21 million.

MBTA- West Broadway Ductbank Replacement

Project Number: S13201

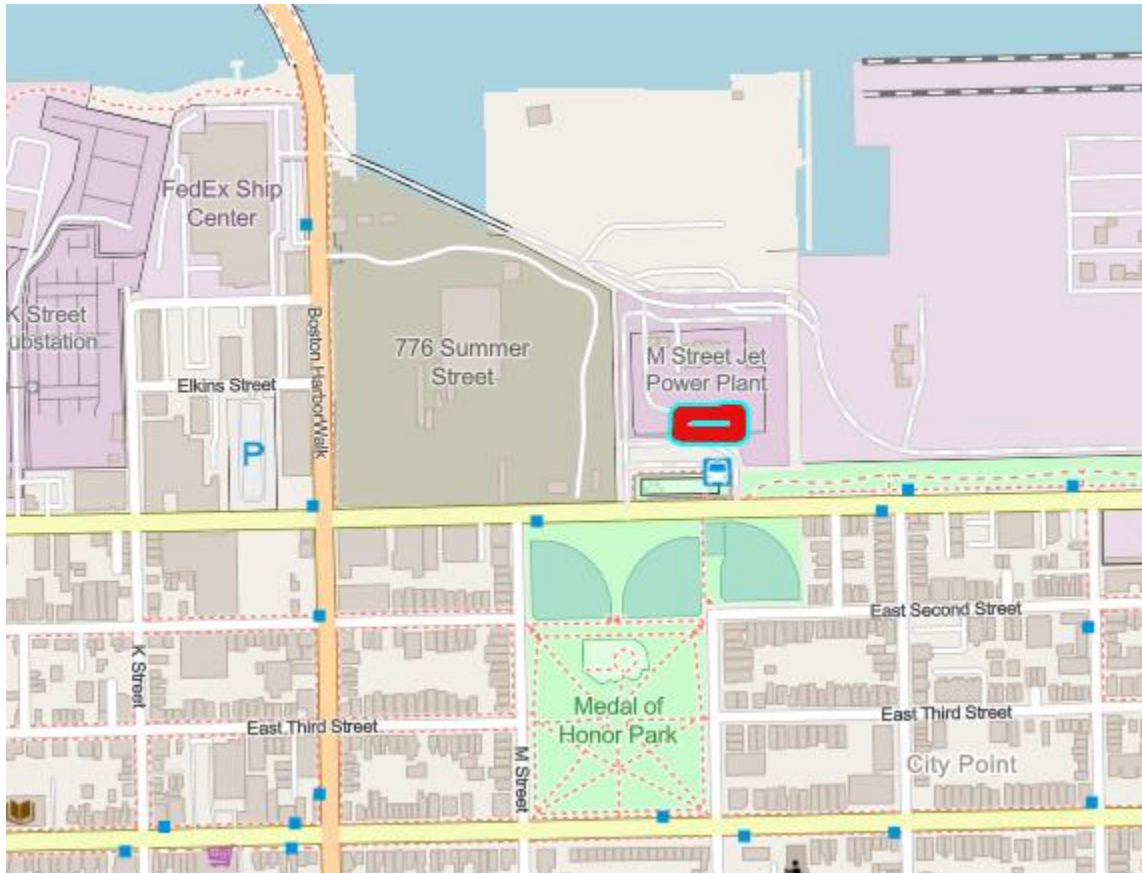
Project Cost: \$25,000,000

Score: 23.8

Project Description:

- The South Boston - West Broadway Ductbank replacement project upgrades deteriorating, century-old ductbanks and power cables. New, modern ductbanks and cables will be installed to ensure reliable AC power distribution and improved

infrastructure. The MBTA has experienced numerous ductbank and cable failures in South Boston which is critical as we have a high concentration of ductbanks and cables due to the close proximity of the South Boston Power Complex (the source of our power for traction power and house power for stations and facilities for the core of the system).



Community Connections Program

Boston- Bluebikes Replacement, 20 Stations and 380 Docks

Project Number: S13180

Project Cost: \$783,860

Score: 70.5

Project Description:

- The City of Boston proposes the replacement of 20 stations (380 total docks) across several neighborhoods in Boston, including Allston/Brighton, Charlestown, East Boston, Fenway, Roxbury, and Seaport.

[Map: Boston city area]

Brookline- Bluebikes Expansion, Three Stations and 10 E-Bikes

Project Number: S13179

Project Cost: \$238,646

Score: 67.5

Project Description:

- The Town of Brookline proposes the construction of three new Bluebike stations—two in South Brookline and one near Longwood Station on the D Branch of the Green Line—and the procurement of 10 new e-bikes.

[Map: Brookline town area]

Cambridge- Bluebikes Replacement, Seven Stations and 123 Docks

Project Number: S13182

Project Cost: \$268,458

Score: 65.5

Project Description:

- The City of Cambridge proposes the replacement of seven stations (123 total docks) across several neighborhoods, including North Cambridge, Porter Square, Cambridgeport, and Kendall Square.

[Map: Cambridge city area]

Chelsea- Bluebikes Expansion, Three Stations, 28 Pedal Bikes, Three E-Bikes

Project Number: S13194

Project Cost: \$268,458

Score: 66

Project Description:

- The City of Chelsea proposes the construction of three new Bluebike stations—one at the Eastern Ave SL3 station and the entrance to the Chelsea Greenway, one adjacent to Chelsea High School, and one at Washington Park in a residential neighborhood near the border with Everett. In addition, the City proposes the procurement of three new e-bikes and 28 new pedal bikes.

[Map: Chelsea city area]

Somerville- Bluebikes Replacement, Five Stations

Project Number: S13181

Project Cost: \$268,458

Score: 67.5

Project Description:

- The City of Somerville proposes the replacement of five stations in the neighborhoods of Magoun Square, Winter Hill, Spring Hill, Union Square, and Davis Square.

[Map: Somerville city area]

Marblehead- Installation of 22 Bicycle Racks (117 Spaces)

Project Number: S13184

Project Cost: \$6,250

Score: 61

Project Description:

- The Town of Marblehead proposes the installation of 22 bicycle racks (117 total spaces) in a variety of locations, including adjacent to schools, shopping centers, and parks.

[Map: Marblehead town area]

Newton- Installation of 67 Bicycle Racks, 2 Bike Shelters, and 12 RRFBs

Project Number: S13183

Project Cost: \$473,132

Score: 64

Project Description:

- The City of Newton proposes the installation of 67 bicycle racks, two bike shelters, and 12 Rectangular Rapid Flashing Beacons (RRFBs). The locations of these installations vary, but include several parks, schools, and village centers.

[Map: Newton city area]