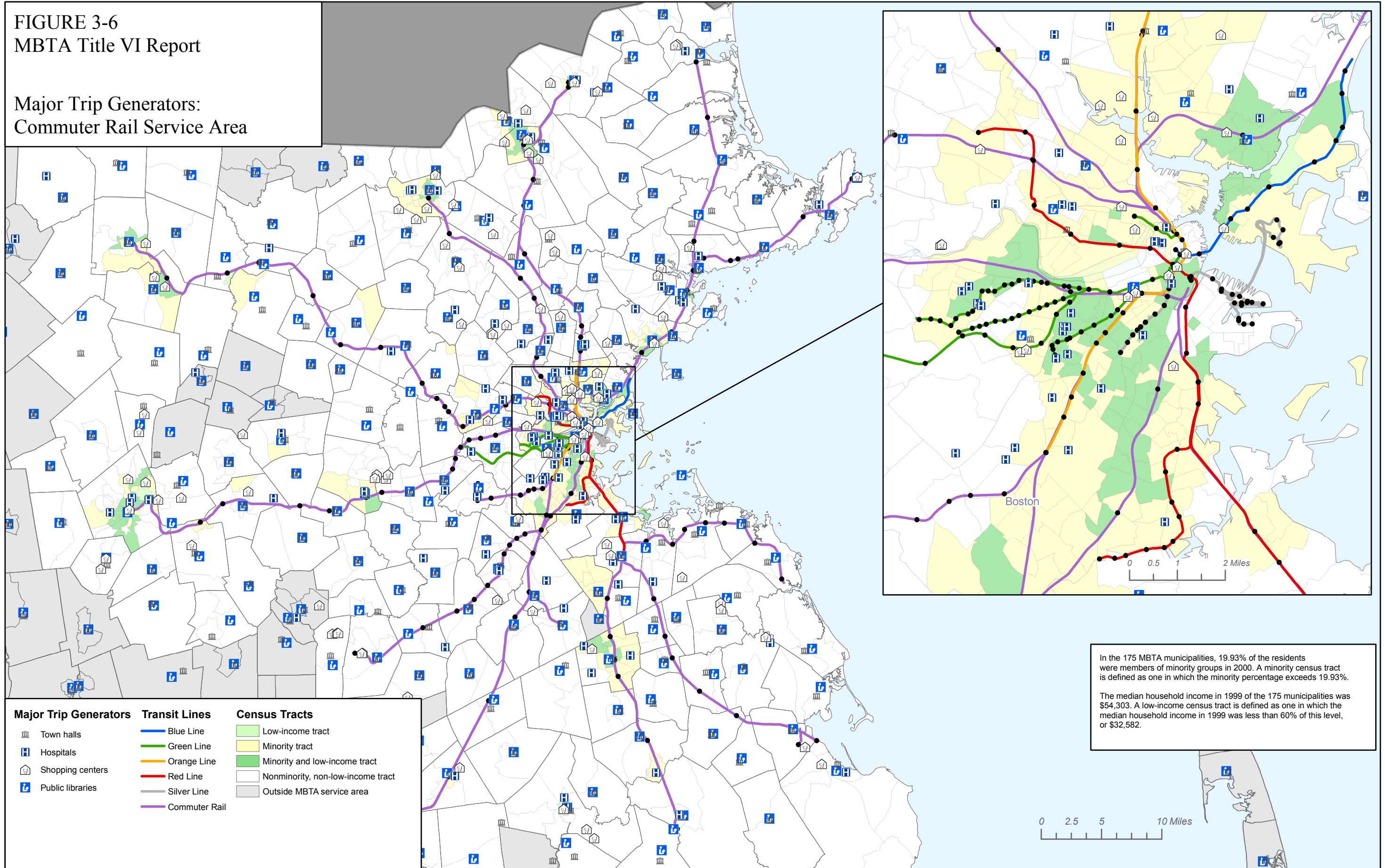


FIGURE 3-6
MBTA Title VI Report

Major Trip Generators:
Commuter Rail Service Area



In the 175 MBTA municipalities, 19.93% of the residents were members of minority groups in 2000. A minority census tract is defined as one in which the minority percentage exceeds 19.93%.

The median household income in 1999 of the 175 municipalities was \$54,303. A low-income census tract is defined as one in which the median household income in 1999 was less than 60% of this level, or \$32,582.

FIGURE 3-7
MBTA Title VI Report

Educational Facilities:
Urban Fixed-Route Service Area

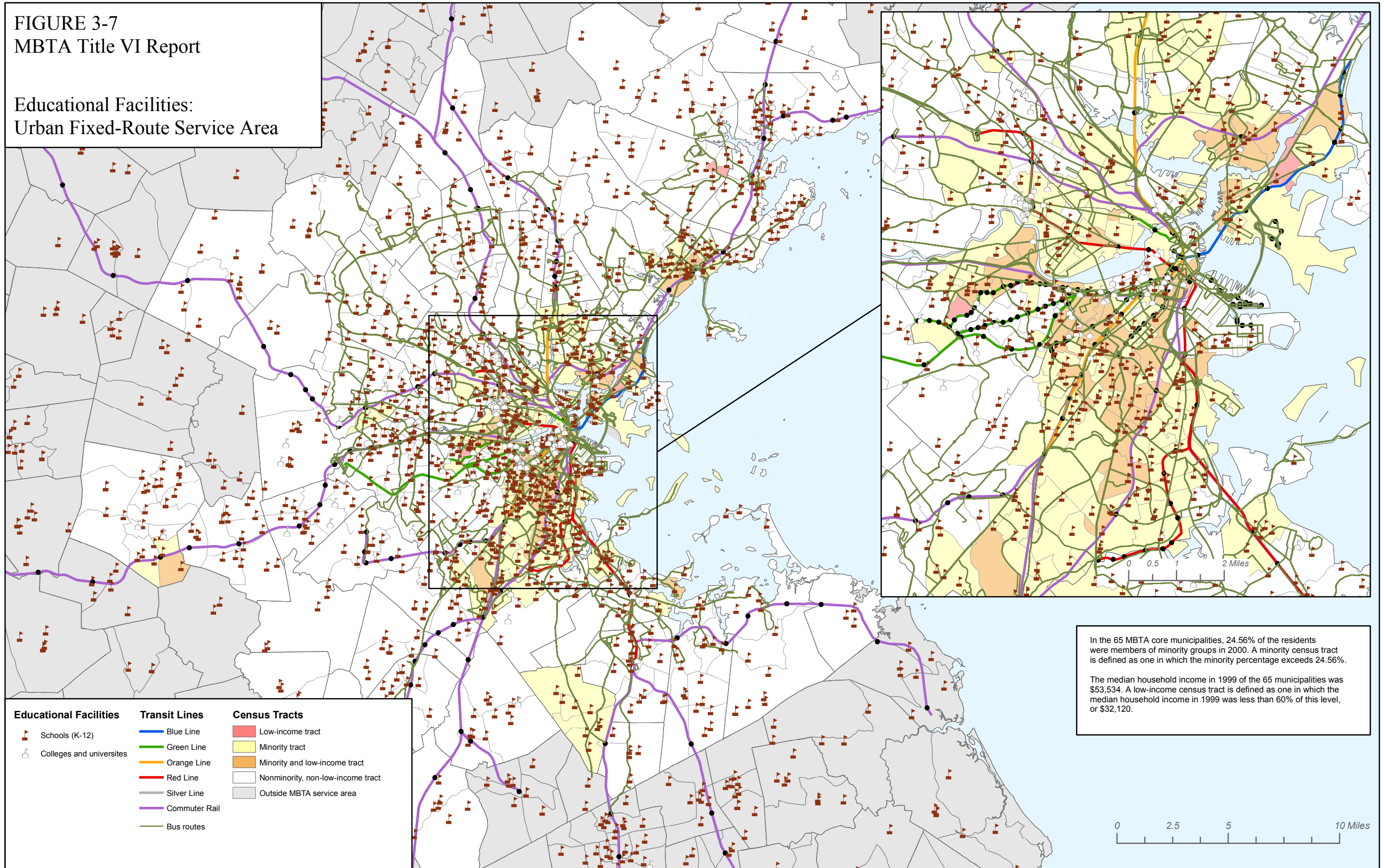
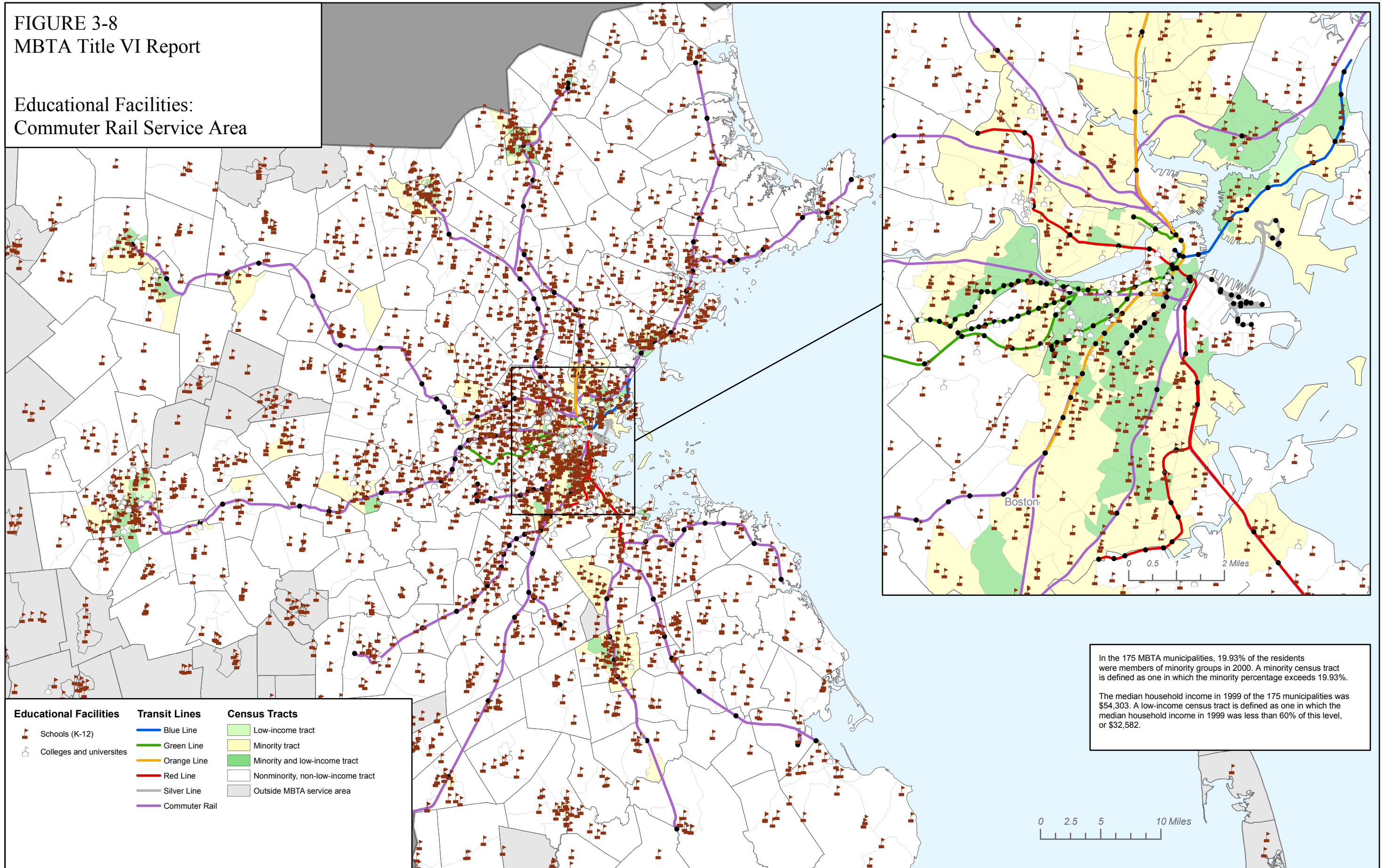


FIGURE 3-8
MBTA Title VI Report

Educational Facilities:
Commuter Rail Service Area



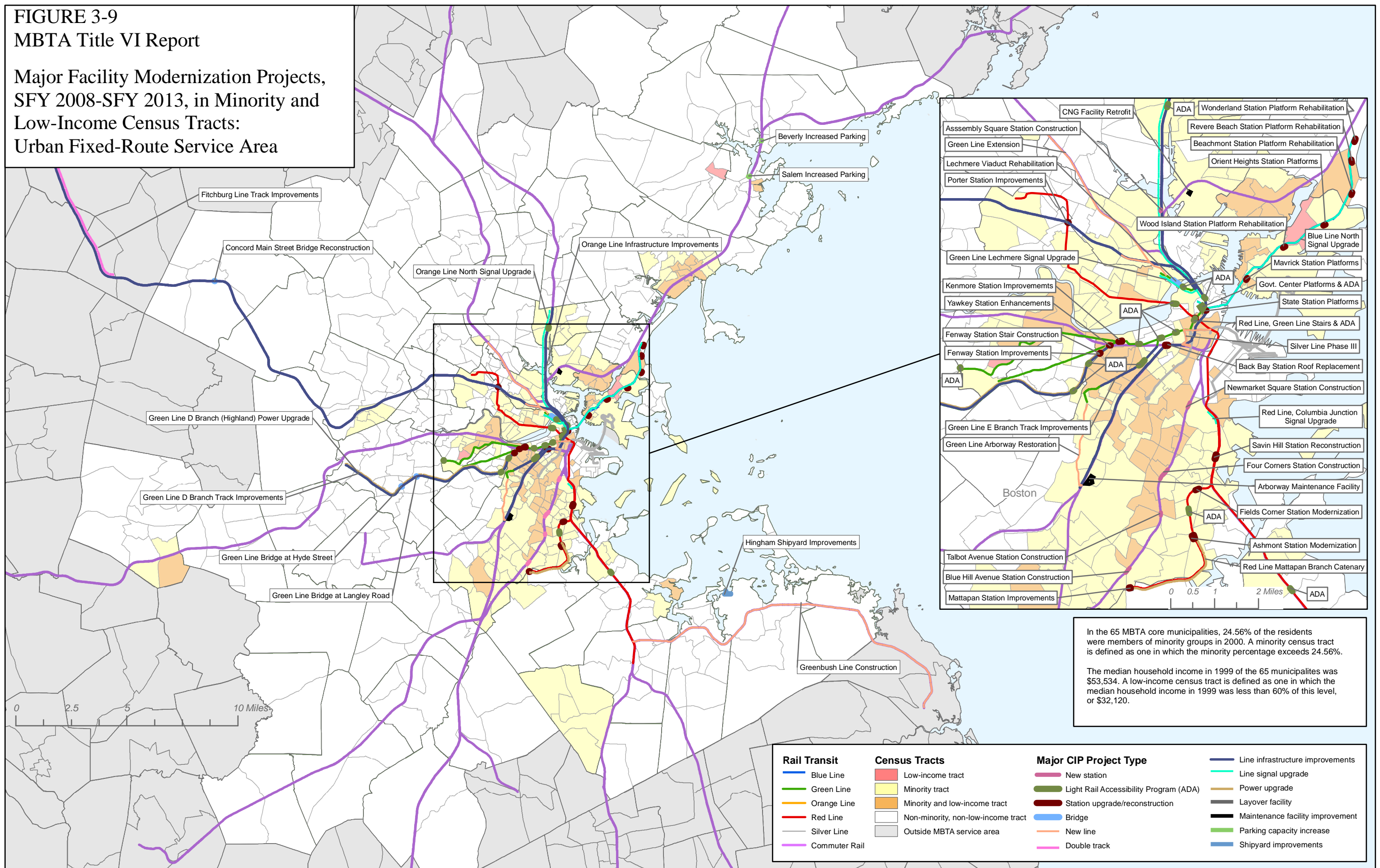
Educational Facilities	Transit Lines	Census Tracts
Schools (K-12)	Blue Line	Low-income tract
Colleges and universities	Green Line	Minority tract
	Orange Line	Minority and low-income tract
	Red Line	Nonminority, non-low-income tract
	Silver Line	Outside MBTA service area
	Commuter Rail	

In the 175 MBTA municipalities, 19.93% of the residents were members of minority groups in 2000. A minority census tract is defined as one in which the minority percentage exceeds 19.93%.

The median household income in 1999 of the 175 municipalities was \$54,303. A low-income census tract is defined as one in which the median household income in 1999 was less than 60% of this level, or \$32,582.

FIGURE 3-9
MBTA Title VI Report

**Major Facility Modernization Projects,
 SFY 2008-SFY 2013, in Minority and
 Low-Income Census Tracts:
 Urban Fixed-Route Service Area**

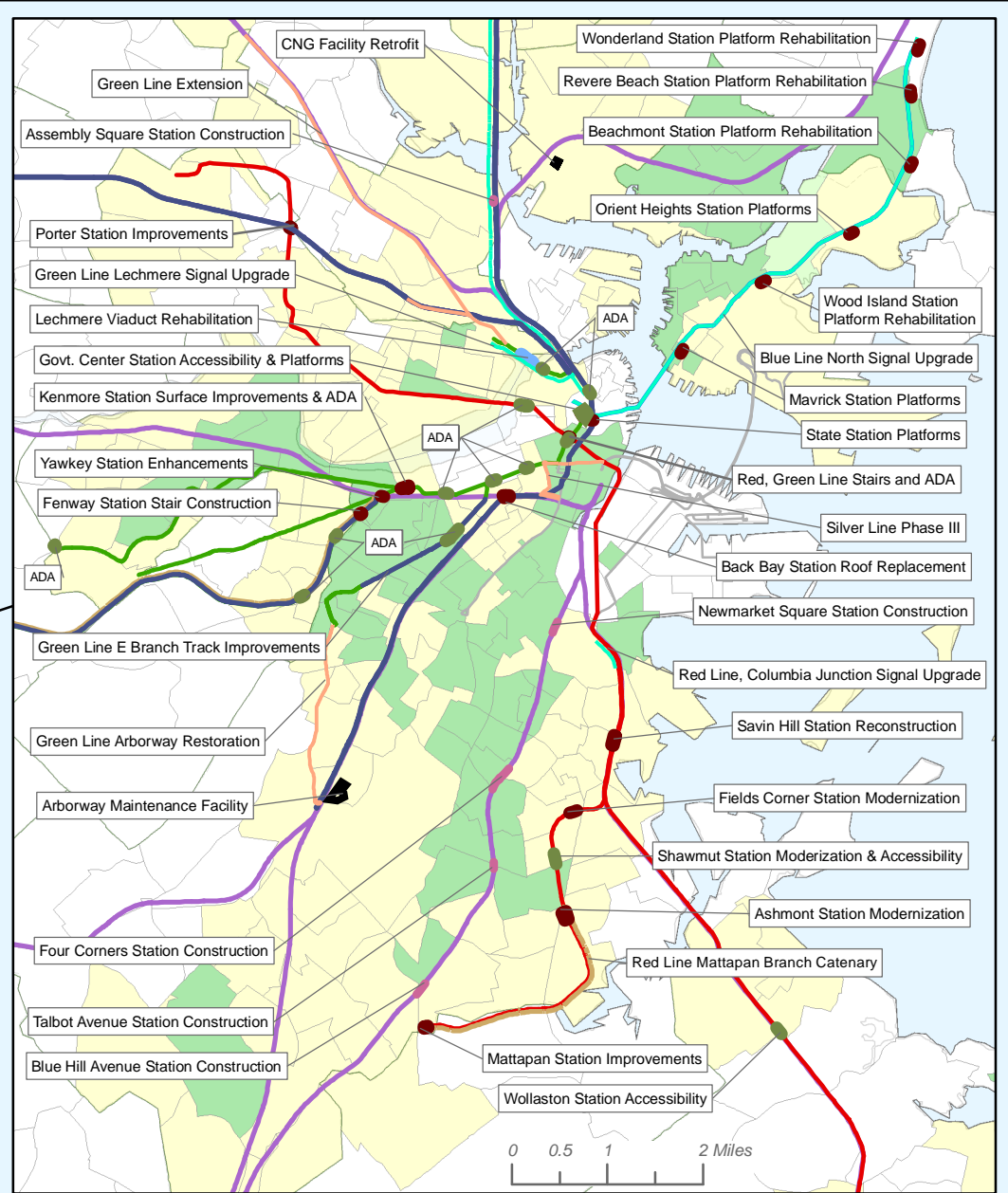
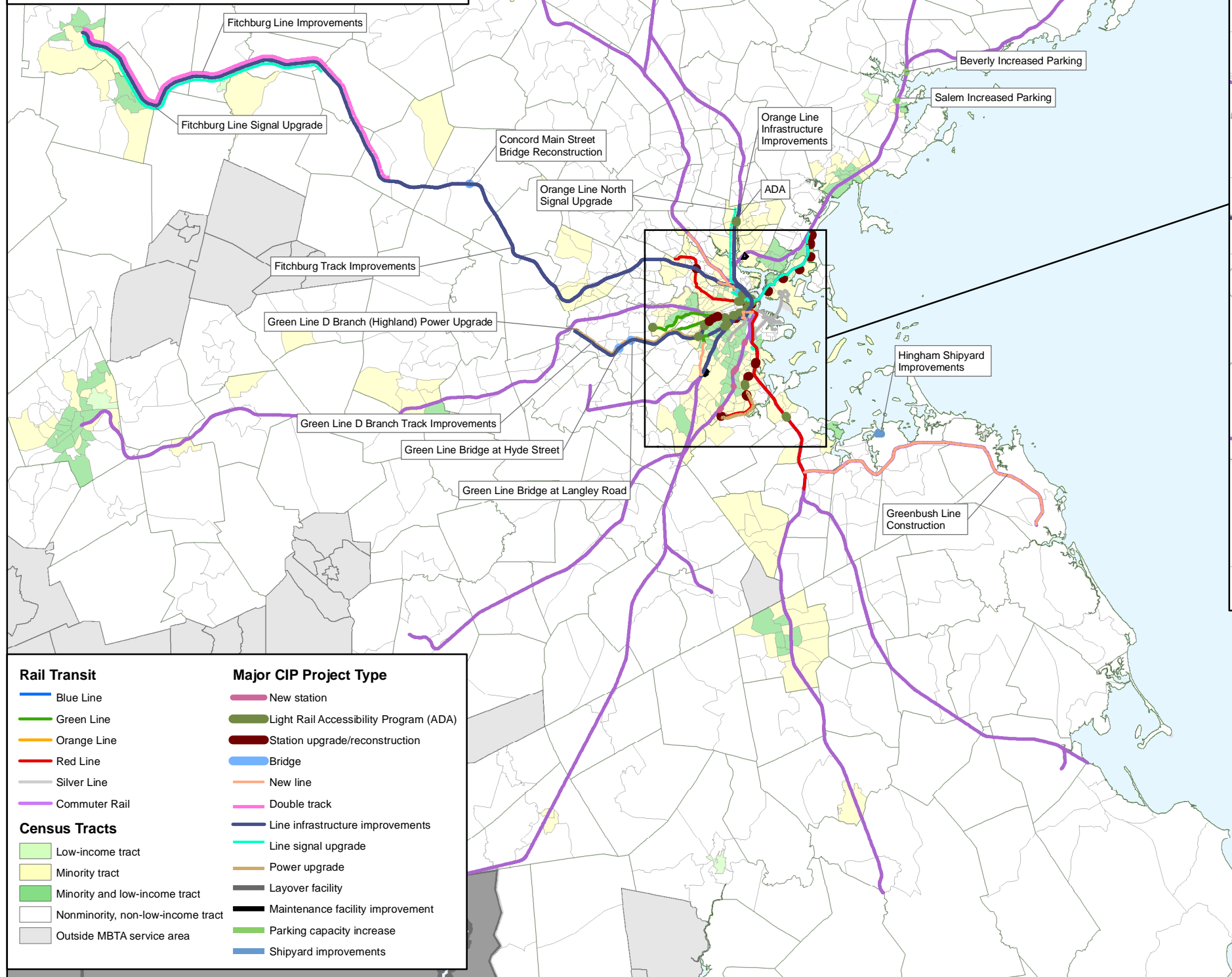


In the 65 MBTA core municipalities, 24.56% of the residents were members of minority groups in 2000. A minority census tract is defined as one in which the minority percentage exceeds 24.56%.

The median household income in 1999 of the 65 municipalities was \$53,534. A low-income census tract is defined as one in which the median household income in 1999 was less than 60% of this level, or \$32,120.

FIGURE 3-10
MBTA Title VI Report

**Major Facility Modernization Projects,
 SFY 2008-SFY 2013, in Minority
 and Low-Income Census Tracts:
 Commuter Rail Service Area**



Rail Transit		Major CIP Project Type	
Blue Line	Green Line	New station	Light Rail Accessibility Program (ADA)
Orange Line	Red Line	Station upgrade/reconstruction	Bridge
Silver Line	Commuter Rail	New line	Double track
		Line infrastructure improvements	Line signal upgrade
		Power upgrade	Layover facility
		Maintenance facility improvement	Parking capacity increase
		Shipyards improvements	

Census Tracts	
Low-income tract	Minority and low-income tract
Minority tract	Nonminority, non-low-income tract
Outside MBTA service area	

In the 175 MBTA municipalities, 19.93% of the residents were members of minority groups in 2000. A minority census tract is defined as one in which the minority percentage exceeds 19.93%.

The median household income in 1999 of the 175 municipalities was \$54,303. A low-income census tract is defined as one in which the median household income in 1999 was less than 60% of this level, or \$32,582.



